



Climate Change Adaptation & Cultural Heritage South Coast Region of Western Australia

A background paper for the
Climate Adaptation Addendum
to Southern Prospects 2011-2016.
Prepared by Dr Louise Duxbury,
Dawn Atkin and Natalie Burford
for South Coast NRM.

Ochre, Anderson Lake, WA. Pic: Peter Morris



Duxbury, L., Atkin, D and Burford, N. 2014 Climate Change Adaptation and Cultural Heritage - South Coast Region of Western Australia. Greenskills and South Coast NRM.

Disclaimer

All information in this report was considered correct and current at the time of publication and any errors or omissions are unintentional.

Green Skills Inc disclaims all and any liability to any person in respect of the consequences of any action or consequence for such persons in reliance, whether wholly or partially, on this report.

South Coast Natural Resource Management does not necessarily agree with the views expressed in this report.



Australian Government The Regional NRM Planning for Climate Change project is funded by the Australian Government.

Contents

Foreword.....	4
Executive Summary	5
1.1 Introduction.....	6
1.2 Southern Prospects Cultural Heritage Aspirational Goals & Principles	6
1.3 What We Know: Changing Climate & the South Coast Region.....	6
1.4 What we Know: Cultural Values	9
1.4.1 What is Cultural Heritage?.....	9
1.4.2 Reports on Cultural Heritage in the Region.....	11
1.4.2.1 Non-Indigenous Cultural Heritage.....	11
1.4.2.2 Aboriginal Cultural Heritage	12
1.5 What We Know: Threats & Changing Climate & the South Coast Region.....	13
1.5.1 Amplification of Current Threats to Cultural Heritage	13
1.5.2 Potential Impacts on Landscapes Within Which Specific Sites are Located	14
1.5.3 Potential Impacts on Specific Cultural Heritage Sites	14
1.5.4 Potential Impact on Potential on Cultural Connection, Wellbeing & Sense of Place.....	15
1.5.5 Potential Impact on Capacity to Adapt to the Changing Climate.....	17
1.6 Action Taken to Date.....	17
1.7 Current Adaptive Capacity of Non-Indigenous and Aboriginal Communities in South Coast Region .	19
1.8 Gaps.....	20
References.....	22
APPENDIX 1: Cultural Heritage Assessment & Management Plans Undertaken to Date through South Coast NRM	24
APPENDIX 2: TPS Heritage Listing & Municipal Inventory Listings by LGA.....	32
APPENDIX 3: Aboriginal Cultural Heritage Registered Site Listing by LGA	59

The background papers to the *Climate Adaptation Addendum of Southern Prospects 2011-16* are a series of detailed technical documents on the potential impacts of the South Coast region's changing climate and how people are adapting to it.

The papers were commissioned by South Coast NRM in 2014 and were part of the Regional Natural Resource Management Planning for Climate Change - Stream 1 project of the Australian Government.

The background papers synthesise the current information on the effect of climate change on each natural resource theme, community capacity to adapt and how people are already adapting.

They also document some of the gaps. The papers provide useful background for community consultation

through South Coast NRM reference groups. The reference groups have used the papers to develop climate adaptation goals and outcomes for *Southern Prospects 2011-2016*.

South Coast NRM recommends the papers are best read in conjunction with *Fry (2015) A Changing Climate- South Coast of Western Australia* and information on the CSIRO and Bureau of Meteorology Climate Change in Australia website www.climatechangeinaustralia.gov.au/en/.

Climate change planning at South Coast NRM will be flexible and adaptive and so information on climate and its impacts will be continually reviewed.

- *Kaylene Parker, Climate Change Project Leader, 2015*

Executive Summary

Cultural Heritage encompasses the places and objects that express who we are as a community, the values and things we hold dear and we wish to pass on from generation-to-generation.

It is also about places important for the health and wellbeing of communities essential for conducting traditions and rituals.

Australia's heritage - the landscape layered with places and associated objects, tells the story of who we are, our histories and our relationship to the environment.

Heritage includes places with natural, Indigenous and historic values. It also includes objects, collections and intangible aspects such as community values, customs, languages, beliefs, traditions and festivals. Heritage forms part of Australia's cultural identity. (Beaton et al. 2006)

Southern Prospects 2011-2016 - the Regional NRM Strategy for the South Coast, recognises the high significance of natural land and waterscapes of the region for non-indigenous and Aboriginal cultural practices and wellbeing. Numerous Aboriginal and non-indigenous cultural sites exist across the region and many are listed on federal, state and local government registers.

The region's size along with its sparse population are key challenges to the management of objects, monuments, buildings, sites and landscapes that together, signify the cultural heritage of the region.

The ability to manage cultural heritage in the face of impacts from a changing climate rests largely with the capacity of local and Aboriginal communities to effectively adapt and respond.

This needs to be supported by appropriate policy and support mechanisms from South Coast NRM as well as local, state and federal governments. Information on the current and anticipated impacts of climate change will assist in prioritising actions to protect and manage the integrity of cultural heritage.

A better understanding of site locations currently on registers and those yet to be assessed and their vulnerability to climate change is also needed.

Local government is an important stakeholder in terms of the mapping of climate change risks such as inundation and erosion and development of localised climate change adaptation strategies that should address key cultural heritage values and sites.

Potential impacts of climate change on threatening processes which in turn impacts on the health of ecosystems and associated cultural values have been summarised as: fire impacts, further spread of *Phytophthora cinnamomi*, increased risk from feral species, altered hydrology, fragmentation of habitat and low genetic variability and increase weed species (Gilfillan 2014: 23).

Particular cultural sites likely to be more at risk are summarised in *Table 1* on page 7. The ability for a community to express its cultural heritage is reliant on wellbeing and an ability to repeat cultural practices within community and landscape.

The psychological impact of environmental degradation has been coined by Australian philosopher and researcher Glenn Albrecht as *Solastalgia* - a form of homesickness one gets when still at home but the environment has changed.

While psychological distress from environmental causes is not new, the understanding of climate change impacts on mental health is relatively young in research terms. The challenge is to identify ways of building community resilience and capacity to adapt to the changing climate, particularly in communities experiencing a reduction in population and associated services.

Deeper partnerships should be forged with local government who are central to protection of non-Indigenous and Aboriginal cultural heritage site management and protection. South Coast NRM has supported Aboriginal cultural projects across the region.

It is important this investment is protected by reviewing management plans and strategies to take. This report has not attempted to catalogue an exhaustive list of potential impacts of the changing climate on cultural heritage. The background paper *Climate Change and the South Coast Region* (Fry, 2014) provides greater detail on climatic changes.

Recommended actions for South Coast NRM are:

- Work with local and state governments to map potential impacts on cultural heritage sites and landscapes with overlays by LGA of zones at highest risk of erosion and flooding.
- Support the identification of likely high priority areas of unregistered Aboriginal cultural sites and registration process.
- Review management plans for Aboriginal and non-indigenous high value cultural heritage sites in light of potential impacts from climate change.
- Investigate Aboriginal cultural practice enterprise opportunities associated with climate change.
- Collate information on long-term climate change impacts on the South Coast using Aboriginal cultural sites as a research focus.
- Develop an engagement plan to specifically increase knowledge and awareness of climate change, likely impacts and adaptation of Aboriginal communities across the South Coast region.
- Seek opportunities to link South Coast Aboriginal leaders in NRM to adaptation to climate change for Indigenous communities across Australia.

1.1 - Introduction

This project addresses key aspects of the South Coast NRM Stream 1 project aiming to update *Southern Prospects 2011 - 2016* to incorporate climate change impacts and adaptation planning.

Southern Prospects is based on program logic outlining the aspirations, goals and desired outcomes for the South Coast region across themes.

This report addresses key elements of the cultural heritage theme and is one of several background papers being prepared.

The background paper *Climate Change and the South Coast Region (Fry, 2014)* should be read in conjunction with the above suite of papers and the current paper. It is recognised all key themes are interlocking.

1.2 - Southern Prospects' Cultural Heritage Aspirational Goals & Principles

The overarching aspiration for the cultural heritage theme articulated in *Southern Prospects 2011 - 2016* is:
"All NRM actions in the South Coast region recognise and respect natural cultural heritage values. Aboriginal practices, spiritual and cultural values are considered across all NRM themes, to support conservation and protection of our natural environment."

The modified principles for managing cultural heritage incorporating climate change are:

- Recognition of cultural knowledge.
- Respectful involvement and use of information.
- Building capacity for culturally appropriate processes.
- Building capacity for managing specific cultural sites and the natural environment as a whole to address threats to values including climate change.
- Identification of areas of key interest.
- Communication using agreed protocols, with openness and transparency.
- Building resilience of Aboriginals and communities across the region to adapt to climate change.

1.3 - What we Know: Changing Climate & South Coast Region

Over the past 40 years, varying degrees of changing climate has been experienced across the region due to changes in weather systems. Interim climate projections for the Southern and South-Western Flatland Cluster, incorporating the whole of the south-west of WA and parts of SA have been summarised as:

- Temperature to increase in all seasons.
- More hot days and fewer cold days.
- Decline in winter rainfall & uncertain summer rainfall.
- Extreme rainfall intensity will increase.
- Natural rainfall variability will continue and

may mask any trend in average rainfall for some decades particularly in summer. (Fry, 2014: 14).
The impacts of changing climate have been described as primary effects on climate variables - air and sea surface temperatures, solar radiation, precipitation, humidity and wind and secondary climatic impacts, see Fig. 2, page 8 (Inglis et al.2014).

Changing Climate Impacts	Non-Indigenous Cultural Heritage	Aboriginal Cultural Heritage
<ul style="list-style-type: none"> • Sea-level rise. • Coastal inundation. • Saltwater intrusion into freshwater systems including groundwater. 	<ul style="list-style-type: none"> • Historic buildings and monuments in low-lying areas at risk of flooding. • Coastal environment that detracts from cultural aesthetic and use values. 	<ul style="list-style-type: none"> • Estuaries, rivers, wetlands and groundwater sources at risk from saltwater intrusion impacting on environmental values that link to cultural values. • Aboriginal fish-traps in estuaries and foreshore middens. • Potential impact on surface groundwater sources. • Inundation of sites on the coast, estuary and river foreshores - difficult to locate, describe unknown sites.
<p>Increased temperatures, evaporation of water bodies, temperature of waterways and water bodies.</p>	<p>Water quality in rivers, wetlands and estuaries that detracts from cultural aesthetic and use values.</p>	<ul style="list-style-type: none"> • Water quality in rivers, wetlands and estuaries that detract from cultural aesthetic and use values. • Impacts on environmental values linking to cultural values.
<ul style="list-style-type: none"> • Increased erosion from sea-level rise. • Surges. • Storm activity. • Flooding events. 	<ul style="list-style-type: none"> • Historic buildings and monuments particularly low lying areas risk of erosion and storm damage. • Coastal, river floodplains, estuary foreshores. 	<ul style="list-style-type: none"> • Aboriginal fish-traps in estuaries and foreshore middens.
<ul style="list-style-type: none"> • Increased bushfires from temperature increases. • Higher evapo-transpiration. • Less rainfall. • Rainfall at different times of the year. • Less soil moisture. 	<ul style="list-style-type: none"> • Damage to historic buildings and monuments. • Impacts environmental values that link to cultural values. 	<ul style="list-style-type: none"> • Damage to scar trees, man made structures, burial sites, middens. • Impacts environmental values linked to cultural values. • Availability and continuity of bush tucker and medicinal flora and fauna.
<ul style="list-style-type: none"> • Increased drought. • Less rainfall. • Rainfall at different times of year, variable across years. • Reduced run-off into rivers, storage dams and groundwater. 	<p>Impacts environmental values linking to cultural values.</p>	<ul style="list-style-type: none"> • Impacts on environmental values that link to cultural values. • Availability and continuity of bush tucker and medicinal flora and fauna.

Rainfall

There is a range of climates naturally occurring across the region from higher rainfall in the west, to lower rainfall areas in the east of the region.

The baseline for comparison is important because there appears to be two different climate change points, from 1975 for the reduction in low-pressure systems, affecting western areas and from 2000, for the increase in high pressure systems affecting a wider area of the South Coast (*Hope et al. 2006; Hope and Ganter 2010*).

Presently there is not enough data to determine whether the trend from 2000 is a long term one because natural variability can mask any trends in short term data (*Fry 2014*). Fry uses DAFWA Southern Agricultural Region figures indicating the inconsistency in the changes in rainfall experienced across the region.

The upper of the two maps in Figure 2 shows the familiar drying in the west of the region, while the lower one indicates increases in annual rainfall (mainly summer rainfall) in the central South Coast (*Fry 2015: 13*).

The background paper *Climate Change Adaptation and Water Resources in the South Coast Region* (*Gunby 2014*) indicates that over the past 40 year there has been:

- A 6-8 per cent decrease rainfall Albany to Nornalup.
- A 15 per cent decrease in annual rainfall Mt Barker.
- Minimal change in the middle and eastern part of the region.

Projections of future rainfall by 2030 show:

- 2-3 per cent further reduction Denmark.
- 15 per cent further reduction inland parts of Great Southern (*Gunby 2014*).

The impact of reduced rainfall is particularly significant when looking at streamflow. Streamflow can be expected to decrease three times the percentage change in rainfall (*Gunby 2014*).

Streamflow monitoring since 1960 has shown:

- A 31 per cent decrease Deep River Walpole.
- A 22 per cent decrease Denmark River.
- A 15 per cent decrease Marbellup Brook Elleker.
- Eastern streamflow changes have been minor (*Gunby, 2014*).

Predictions indicate further reductions in the future (*Gunby, 2014*). Most information on groundwater is focused on water reserves near Albany, Bremer Bay, Hopetown and Esperance as these are used for abstraction.

Levels in the Albany groundwater area are showing a decreasing trend of 0.5m every 10 years, but it is not possible to determine the impacts of climate change from other factors (such as increased abstraction). No projections have been made of climate change on groundwater resources (*Gunby, 2014*).

Gunby (2014) suggests shallow groundwater sources are likely to be more impacted by climate change as they are more susceptible to increased "evaporation and evapotranspiration from vegetation."

Sea Temperature Rise

Sea-levels are naturally rising over the very long term with the degree accelerating due to human induced global warming. The degree of increase is variable across the globe and regionally. The South Coast experienced a 4.6mm per year sea-level rise at Esperance compared to 7.4mm at Hillarys, Perth, 2.1mm at Sydney (Port Kembla), 2.6mm at Melbourne and 7mm at Darwin. (*National Tidal Centre, 2010* quoted in *Aurora Environmental 2014: 10*).

If emissions continue to track at the top of IPCC scenarios, global average sea-level could rise by nearly 1m by 2100 (0.52-0.98m from a 1986-2005 baseline). If emissions track along the lowest scenario, then global average sea-level could rise by 0.28-0.60m by 2100 (from a 1986-2005 baseline) (*Aurora Enviro 2014*). It has been recommended the upper bounds be adopted for coastal planning within a 100 year time-frame (*Bicknell 2010*).

The implication of sea-level rise includes inundation of coastal areas and increased coastal erosion with losses in coastal foreshores, housing and infrastructure as well as saltwater intrusion to coastal freshwater bodies and groundwater systems. The increased risk of inundation is likely to be exacerbated by increases in storms and storm surges.

Other ocean warming and sea level rise implications relevant to the region include possible modification of the Leeuwin Current and acidification of the marine environment both with potential impacts on species distribution and survival (*Aurora Environmental 2014*).

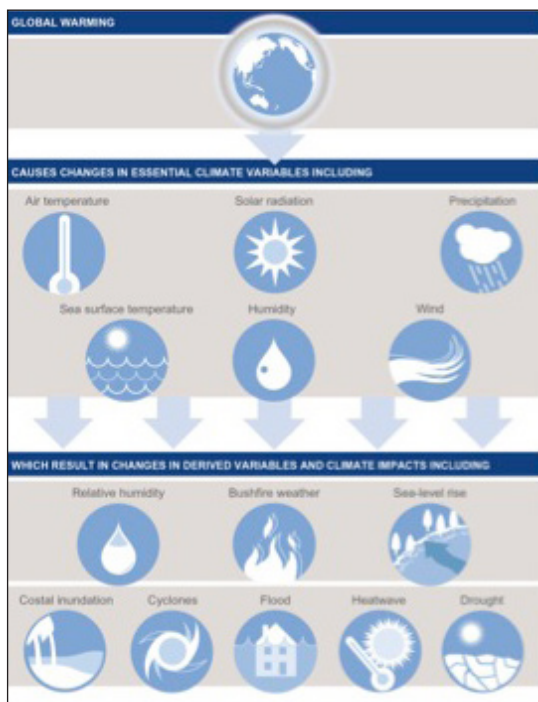


Figure 1: Primary and secondary climate effects (Inglis et al. 2014: 6).

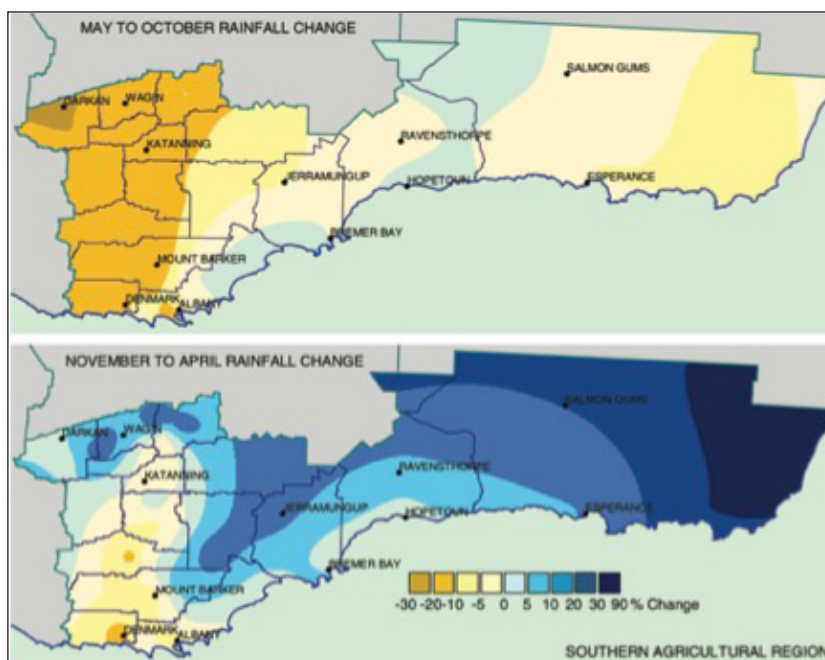


Figure 2: Changes in rainfall Southern Agricultural Region Department of Agriculture and Food 1910-1975 versus 1976-2008 (Carmody et al. 2010 in Fry 2014: 13).

1.4 - What we Know: Cultural Values

1.4.1 - What is Cultural Heritage?

Cultural heritage encompasses the places and objects that express who we are as a community, the values and things we hold dear and we wish to pass on from generation-to-generation.

It is also about places important for the health and wellbeing of communities and where traditions and rituals are conducted.

Under the UN World Heritage Convention Article 1, cultural heritage is considered to comprise:

Monuments. Architectural works, works of monumental sculpture and painting, elements or structures of an archaeological nature, inscriptions, cave dwellings, and combinations of features, which are of outstanding universal value from the point of view of history, art or science.

Groups of buildings. Groups of separate or connected buildings which, because of their architecture, their homogeneity or their place in the landscape, are of outstanding universal value from the point of view of history, art or science.

Sites. Works of humans or the combined works of nature and of humans, and areas including archaeological sites that are of outstanding universal value from the historical, aesthetic, ethnological or

anthropological points of view (Australian National University. 2009: 12).

Federal State of the Environment reporting (2006) used the term to refer to "Indigenous, historic, aesthetic, scientific and social values expressed in places and their associated objects." Some Australian states introduced cultural landscapes on heritage lists, further broadening the definition.

Natural heritage has been differentiated from cultural heritage by identifying it as "dynamic ecological processes, evolution and the ability of ecosystems to be self-perpetuating," (Beaton et al 2006). There is recognition, cultural identify is based on place and the continuity and health of natural values.

Australia's heritage - the landscape layered with places and associated objects, tells the story of who we are, our histories and our relationship to the environment.

Heritage includes places with natural, Indigenous and historic values and includes objects, collections and intangible aspects such as community values, customs, languages, beliefs, traditions and festivals.

Heritage forms part of Australia's cultural identity (Beaton et al.2006). Southern Prospects 2011-2016 recognises the high significance of the region's natural land and waterscapes for Aboriginal and non-indigenous cultural values, practices and wellbeing.

Aboriginal cultural heritage exists throughout the lands and waters of Australia and all aspects of the landscape are important to Aboriginal people (*Southern Prospects 2011 - 2016 p. 145*).

Strong cultural values in Aboriginal and non-indigenous communities are important for motivating protection of cultural values, while simultaneously leaving

communities vulnerable to impacts from changing climate on cultural values. *Southern Prospects 2011 - 2106* states on page 145:

"The effective protection and conservation of this heritage is an important asset in maintaining our Australian identity and the health and wellbeing of Aboriginal people (and the whole community)."

Type	Organisation	Legislation	What is Listed	No. of Places Listed in WA
Statutory Heritage Listings				
State Register	Heritage Council (assisted by State Heritage Office)	Heritage of Western Australia Act 1990	Places of State significance included in the State Register of Heritage Places	1,400
Conservation Order	Heritage Council (assisted by the State Heritage Office)	Heritage of Western Australia Act 1990	Places of State significance or potential State significance (special cases)	5
Heritage Agreement	Heritage Council (assisted by State Heritage Office)	Heritage of Western Australia Act 1990	Places protected by long-term agreement between parties	100
Town Planning Scheme (Heritage List)	Local Governments	Planning & Development Act (2005); Local Planning Schemes	Places of local heritage significance	9,000
National Heritage List	Australian Heritage Council	EPBC Act (1999)	Places of national significance	15
Other Listings and Surveys				
Local Government (Municipal) Inventory)	Local governments	Mandated under the Heritage of WA Act 1990 but controlled by local governments	Places of local significance	20,000
List of Classified Places	National Trust of Australia (WA)	National Trust of Australia (WA) Act (1964)	Places of local, state or national significance	2,300

Table 1: Types of heritage listings and number of listings across WA. www.stateheritage.wa.gov.au/about-us/importance-of-heritage/heritage-listings-explained.

1.4.2 - Reports on Cultural Heritage in the Region

1.4.2.1 - Non-Indigenous Cultural Heritage

Reports identifying cultural values for selected specific areas and landscapes such as individual waterways, cultural sites, buildings and monuments have contributed to the global, national and state level listing of cultural sites since Europeans settled in Australia.

Table 1 (above) illustrates the different categories of statutory and non-statutory cultural heritage listings.

In addition, there are international listings such as world heritage sites encompassing cultural or natural sites or sites containing cultural and natural importance.

There are no world heritage areas in the South Coast region. All tiers of government, under a raft of legislation, share responsibility for protection of listed sites. Local government bears responsibility for identification and management of the greatest number of sites despite having limited resources for protection.

Table 2 (below) summarises the number of cultural sites on the Heritage List and Municipal Inventory for LGAs across the region. Listings under the categories in Table 1 are searchable by local government area.

For example, in the local government area of Denmark, there are 144 cultural sites listed either on the TPS Heritage List or the Municipal Inventory, see Appendix 2. The range of sites include:

Monuments. Point Hillier Cairn, Denmark War Memorial, Peace Pine Tree at District Hospital, Moreton Bay fig tree.

Buildings. Such as specific heritage houses, historic local halls, Nornalup Tea House, Scout Hall, Old Butter Factory, doctor’s surgery.

Sites. Natural and man-made such as Genelup Beelup/Hay River, Kwoorabup Beela/Denmark River, Blue Lake, several urban bushland reserves, karri trees on specific road verges, Torbay to Denmark and Denmark to Nornalup historical railway alignments, Frankland River and Nornalup Inlet (Kwakoorillup Beela).

See Appendix 2 for the full Denmark list.

Local Government	Non-indigenous Heritage Sites	Registered by the Heritage Council	Registered on Municipal Inventory
Albany	426	426	281
Broomehill-Tambellup	209	209	206
Cranbrook	35	35	31
Denmark	144	144	123
Esperance	89	89	62
Gnowangerup	115	115	109
Jerramungup	16	16	13
Plantagenet	72	72	46
Ravensthorpe	122	122	111

Table 2: Non-indigenous cultural heritage sites on State Heritage and Municipal Inventory by Local Government Area (<http://inherit.stateheritage.wa.gov.au/public>).

1.4.2.2 - Aboriginal Cultural Heritage

The WA Department of Aboriginal Affairs' Aboriginal Heritage Inquiry System provides the ability to identify registered Aboriginal sites and their location.

However, it is important to note that not all sites are on the register.

South Coast NRM commissioned a desktop study report compiling information about cultural heritage values by *Adele Millard Consultancy Services (2013)* for 15 important cultural heritage areas across the region.

The report emphasised the cultural values identified to date across the region are only for sites that have been registered with the Register of Aboriginal Sites (RAS) and there are many others yet to be formally identified and described.

The sites represented in this report are those discovered and reported to the RAS and does not include numerous sites yet to be uncovered or the potential multitude of sites that may have been identified in heritage surveys, or known to Traditional Owners or other land-users, but which yet to be reported to the RAS.

This highlights the limitations of formally recorded current knowledge of Aboriginal cultural sites across the region and therefore the ability to manage them for potential climate impacts.

It is also interesting to note an understanding of archaeological sites can provide important knowledge of long term environmental condition and adaptive capacity to changes in climate across the region.

Archaeological information is an important consideration for any type/level of environmental management.

This is because the current landscape, its condition and mechanisms of management, relates directly to processes of change and adaptation over thousands of years.

Human-environment relations are an important part of the ecological systems that environmental managers are involved in protecting and conserving (*Guilfoyle 2011: 42*).

Some of the cultural evidence found across the sites reported by *Millard (2013)* includes:

- Mythological and historical sites.
- Skeletal material/burial sites.
- Artefacts/scatter sites.
- Midden/scatter sites.
- Man-made structures.
- Quarries.
- Grinding patches/grooves and grinding stones.
- Fish-traps and weirs and camps
- Water sources including, springs, river pools and gnamma holes.
- Plant resources.
- Named places.
- Hunting places.
- Rock shelters.
- Birthing places.
- Stone arrangements.
- Paintings and marked trees.

Table 3 provides lists of registered Aboriginal cultural heritage sites for each of the region's local government area. It also indicates the types of registered sites include rivers, inlets and coastal areas. Many of the sites have multiple features. For example, the Kwoorabup Beela/Denmark River is a mythological site which also has middens, man-made structures and a corroboree site on its banks.

Local Government	No. of Aboriginal Cultural Heritage Sites
Albany	40
Broomehill-Tambellup	5
Cranbrook	15
Denmark	18
Esperance	135
Gnowangerup	14
Jerramungup	46
Plantagenet	17
Ravensthorpe	17

Table 3: Number of registered Aboriginal heritage sites by Local Government area (<http://maps.dia.wa.gov.au/AHIS2/>).

In addition to the importance of specific sites and potential impacts from the changing climate it is important to consider the central nature of landscapes to Aboriginal culture and sense of wellbeing.

The *Cultural Values Study* (Brad Goode & Associates, 2008), commissioned by the Department of Water, covering 29 catchments within the region, articulates the underpinning importance of fresh and coastal waters in terms of food, water and shelter, boundary demarcations, ceremonies and spiritual practices.

"All the big rivers along the South Coast flowed to large coastal inlets which were of primary importance to Noongar culture, as these were the places traditional people would gather during the summer season in order to conduct ceremonies, trade, settle disputes and conduct all cultural business between clans," (Wayne Webb in Goode 2008).

"At these inlets, large weir-type tidal fish-traps were maintained in order to support these ritual aggregations. The archaeological and ethno-historic record also attests to the 'value' of the region's rivers, lakes and wetlands."

"Rivers were traditionally boundaries between group's clan estates, paths of migration to coastal inlets and places where Noongars would camp and collect food."

Many of the region's lakes also contained fish-traps. Lakes and wetlands attracted game and as such were attractive to Noongar clans as hunting areas," (2008: 3-4).

The report also stresses these areas continue to be important for fishing, bush tucker collecting, as a place for family groups to gather and to pass on and reinforce Noongar values on-country.

"In contemporary times places associated with these water sources are often the only natural environs still accessible to Noongar people to continue these cultural practices," (Brad Goode & Associates, 2008: 3-4).

The strength of connection between Aboriginal culture, country and oceans underpins the health and wellbeing of Indigenous communities.

"Country for us is also centrally about identity. Our lands our seas underpin who we are. Where we come from. Who our ancestors are. What it means to be from that place from that country. How others see and view us. How others identify us. How we feel about each other. How we feel about our families and ourselves."

Country to us is fundamentally about our survival as peoples," (Dodson, 2007: 2-4 quoted at www.humanrights.gov.au/sites/default/files/content/.../nt.../chap5.doc).

1.5 - What we Know: Threats & Changing Climate and the South Coast Region

Impacts of climate change will need to be assessed on a sub-regional basis informed by the more localised climate change projections anticipated from CSIRO/BOM in late 2014. There are specific sites found in more vulnerable locations that will require updated management planning to take into consideration

impacts from the changing climate. Likewise, there are landscapes where the impacts on water, fauna and flora are likely to be more significant posing a threat to cultural values and specific cultural practices such as hunting, fishing and gathering of bush tucker and medicines.

1.5.1 - Amplification of Current Threats to Cultural Heritage

Research suggests climate change will have many impacts on the biophysical, economic and social infrastructure of all regions.

Climate change will amplify current challenges to the natural environment and further test the adaptive capacity of local communities, in particular, Aboriginal communities. Changes such as sea-level rise, reduced rainfall and higher temperatures are expected to threaten the resilience of World Heritage properties, exacerbating issues such as habitat loss and

degradation, spread of invasive species and changing fire regimes (Australian National University, 2009).

1.5.2 - Potential Impacts on Landscapes within which Specific Sites are Located

The level of impact from a changing climate on specific cultural sites will, in many cases, be dependent on the level of impact on the landscape within which the sites are located. For example:

"The preservation of unique cultural values - including Aboriginal middens, sea cave deposits, archaeological sites, rock art and cave art sites, is highly dependent on the maintenance and protection of their underlying landforms from climate change impacts," (Australian National University, 2009: 4).

The background paper on *Climate Change and Biodiversity (Gilfillan 2014)*, indicates geological and ecological characteristics increasing the region's vulnerability of biodiversity and assessment should be undertaken on the basis of ecozones. Characteristics increasing vulnerability to climate change include:

- High-level of landscape fragmentation (due to land clearing etc).
- Strong relationships between climate and patterns of distributions of species and communities.

- Long-term climate dynamism has resulted in many plants being in small fragmented populations.
- Refugial/relictual species that have evolved little during the climate dynamism have a limited capacity to adapt.
- Many plant taxa with small distributions are often restricted to particular rock or soil types.
- High level of endemism and restricted distributions in flora and some fauna groups (eg. some invertebrates).

It was also noted species that have evolved and persisted through a changing climate may have the flexibility to further adapt. The paper indicates; *"The overarching principle for mitigating the impacts of climate change on biodiversity is the maintenance or restoration of resilient ecosystems," (Gilfillan, 2014:20).*

Resilient ecosystems are the basis for continuity of cultural heritage and therefore an appropriate objective from a cultural heritage perspective. Potential impacts of climate change on threatening processes, that in turn impact on the health of ecosystems, have been summarised by *(Gilfillan, 2014)* in *Table 4* below.

Fire Regimes	Increased frequency, intensity and extended fire season
	Increased risk especially in integrated land systems.
	Decreased species recovery following fire due to lower rainfall impacting on physiological processes.
<i>Phytophthora cinnamomi</i>	Change in climatically suitable area for <i>P. cinnamomi</i> .
	Increased flood events may increase <i>P. cinnamomi</i> spread.
	Climatically stressed plants may be more vulnerable to <i>P. cinnamomi</i> .
	Increase in summer rainfall will create optimal conditions for the pathogen to reproduce and spread.
Predation	Increased risk of invasion by feral and invasive species due to their ability to rapidly disperse and invade "new" climatically suitable areas.
Altered Hydrology	Fewer recharge events, decrease in salinity and waterlogging.
Fragmentation	Fragmentation of habitat will substantially reduce the ability of species to move to areas of suitable climate.
	Increased edge effects.
	Low genetic variability.
Small Population	Decreased genetic variability of small populations will reduce the ability of species to adapt to changing climatic conditions.
Weeds	Increased risk of invasion by feral and invasive species/diseases due to their ability to rapidly disperse and invade "new" climatically suitable areas.

Table 4: The potential impacts of climate change on the primary threatening processes in the South Coast region *(Gilfillan 2014: 23 after Coffey 2009)*.

Changing Climate Impacts (after Figure 1)	Non-Indigenous Cultural Heritage Potential Impacts	Aboriginal Cultural Heritage Potential Impact
Sea-level rise: coastal inundation, saltwater intrusion into freshwater systems including groundwater.	<ul style="list-style-type: none"> • Historic buildings and monuments in low-lying areas at risk of flooding. • Coastal environment that detracts from cultural aesthetic and use values. 	<ul style="list-style-type: none"> • Estuaries, rivers, wetlands and groundwater sources at risk from saltwater intrusion impacting on environmental values that link to cultural values. • Aboriginal fish-traps in estuaries and foreshore middens. • Potential impact on water reliant on surface groundwater sources. • Rising sea-levels are also likely to inundate sites on the coast and on estuary and river foreshores making it more difficult to locate and describe currently unknown sites.
Increased temperatures: increased evaporation of water bodies, temperature of waterways and water bodies.	Water quality in rivers, wetlands and estuaries that detracts from cultural aesthetic and use values.	<ul style="list-style-type: none"> • Water quality in rivers, wetlands and estuaries that detracts from cultural aesthetic and use values. • Impacts on environmental values linking to cultural values.
Increased erosion from sea-level rise, surges, storm activity, flooding events.	<ul style="list-style-type: none"> • Historic buildings and monuments particularly in low-lying areas risk of erosion and storm damage. • Coastal, river flood plains, estuary foreshores. 	<ul style="list-style-type: none"> • Aboriginal fish-traps in estuaries and foreshore middens.
Increased bushfires from temperature increases, higher evapotranspiration, less rainfall, rainfall at different times of the year, less soil moisture.	<ul style="list-style-type: none"> • Damage to historic buildings and monuments. • Impacts environmental values linking to cultural values. 	<ul style="list-style-type: none"> • Damage to scar trees, man-made structures, burial sites, middens. • Impacts environmental values linking to cultural values.
Increased drought less rainfall, rainfall at different times of the year, more variable across years, reduced run-off into rivers, storage dams and groundwater systems.	<ul style="list-style-type: none"> • Impacts environmental values that link to cultural values. 	<ul style="list-style-type: none"> • Availability and continuity of bush tucker and medicinal flora and fauna.

Table 5: Potential impact of changing climate on specific non-indigenous and Indigenous cultural heritage sites.

1.5.4 - Potential Impact on Cultural Connection, Wellbeing & Sense of Place

The changing climate is likely to impact on how communities interact with the environment connected to sense of place and wellbeing.

Changes in climate are likely to impact on sense of wellbeing such as the experience of living in areas with more variable climatic conditions, increased drought, reduced rainfall and higher temperatures. These changes could impact on capacity to conduct viable agricultural enterprises, higher uncertainty of success in agricultural enterprises, as well as impacts on plant and animal species less able to adapt to climate changes, and drying of waterways and wetlands. Such changes could alter the way the environment is seen and interacted with.

Aboriginal custodians clearly articulate they are responsible for the health of the environment and continuity of culture. The health of waterways, for example, is seen as being bound-up in the health of families and communities.

"Noongars see themselves and their families' cultural and physical health to be interwoven with the health of the natural world and the waterways. If the health of this world fails due to interference with the waterways, Noongars see their own communities' health as suffering as well," (Goode and Associates 2008: 139).

The psychological impact of environmental

degradation has been termed as solastalgia *'the distress that is produced by environmental change impacting on people while they are directly connected to their home environment'* (Albrecht et al. 2007: abstract).

While psychological distress from environmental causes is not new, the understanding of climate change impacts on mental health is relatively young in research terms. International research on health indicators and climate change shows it will be important to monitor its health impacts on individuals and communities across the region. This is particularly true for Aboriginal families who already experience higher rates of preventable diseases and have less access to resources.

Research on Indigenous populations in Canada provides some important pointers on indicators of health. Its assessment of Canadians' health in a changing climate (Se'guin 2008) concluded that in the case of some extreme events, less tangible psychosocial effects can do the most damage to people's health. It pointed to studies in Europe and America that established a correlation between flooding and subsequent increases in common mental disorders, including anxiety, depression and post-traumatic stress disorder (WHO 2002; Hutton 2000) (In Donatuto et al. 2014: 359). The ability for a community to express its cultural heritage is reliant on wellbeing and an ability to repeat cultural practices within community and landscape.

Community Connection	Members actively participate in community functions and help each other, particularly in connection with the harvest, preparation and storage of natural resources.
Natural Resources Security	Local natural resources (air, water, land, plants and animals) are abundant, accessible and support a healthy ecosystem(s) and healthy human community. The community equitably shares these natural resources.
Cultural Use	The community is able to perform its cultural traditions in a respectful and fulfilling way using local natural resources.
Education	Knowledge, values and beliefs are actively passed from Elders to youth.
Self-determination	Communities develop and enact their own healing, development and restoration programs.
Wellbeing	Community members maintain connections to meaningful locations, confident their health and that of the next seven generations is not at risk due to contaminated natural resources.

Table 6: Indigenous health indicators (Donatuto, Gregory, and Campbell in Donatuto et al. 2014: 359).

1.5.5 - Potential Impact on Capacity to adapt to the Changing Climate

The protection and management of cultural heritage across the region is dependent on the capacity of the communities.

Ability to adapt to challenges such as climate change depends on health and wellbeing across a range of dimensions. One way of understanding the different elements of individual, community and environmental ability to adapt to change is referred to as the *five capitals*.

Natural capital. The basis not only of production but of life itself. It includes:

- **Resources.** Renewable and non-renewable materials.
- **Sinks.** These absorb, neutralise or recycle wastes.
- **Processes.** Such as climate regulation.

Human capital. People's health, knowledge, skills and motivation - all needed for productive work. Building human capital through education and training is central to a flourishing society.

Social capital. Institutions helping us and our communities to maintain and develop eg. families, businesses, trade unions, schools and voluntary organisations.

Financial capital. Makes it possible to own or trade the other kinds of capital. But unlike the other types, it has no real value itself but is representative of natural,

human, social or manufactured capital.

Manufactured/infrastructure capital. Goods or assets that help produce tools, machines and buildings.

The current status of the region in terms of the five capitals is addressed in the South Coast NRM background paper *Socio-economic Dimensions of Climate Change and Capacity to Adapt South Coast Region WA* (Duxbury and Hodgson 2014).

Our cultural values are embedded across all five capitals. A raft of studies on mental health after the drought in NSW, for example, indicates drought 'compromises mental health' affecting sections of the community in different ways.

A key conclusion from the studies, concluded during prolonged drought, social resources within communities were depleted at a time when they were most needed and long-term interventions that enhanced capacity and resilience were needed.

The challenge is to identify ways of building community resilience and capacity to adapt to the changing climate particularly in communities experiencing a reduction in population and associated services.

1.6 - Action Taken to Date

South Coast NRM has an interest in cultural heritage from a number of perspectives. The organisation is responsible for the delivery of the regional NRM strategy *Southern Prospects 2011 - 2016* with a vision for 'sustainable and resilient communities across the region'.

It has facilitated the investment of considerable funds to achieve this vision, addressing key threats to resilience of the environment and South Coast communities. The current and potential impacts from the changing climate are a serious threat to the resilience of the South Coast.

The current suite of background papers across all key themes - *regional capacity; land; biodiversity; water; coastal and marine and cultural heritage* - is an important response by South Coast NRM to the

current and potential impacts from climate change. The facilitation role taken by the organisation in development and implementation of *Southern Prospects* is an important part of acknowledging and protecting cultural heritage.

There are some stakeholders where deeper partnerships can be forged. Local government has been recognised in this regard and is central to the management and protection of non-indigenous and Indigenous cultural heritage sites. Between 2008 and 2013, South Coast NRM has auspiced Aboriginal cultural projects across the region with the following key objectives:

- Specific site management plans.
- Recording and identifying cultural information.
- On-ground management work.
- A mixture of the above activities.

Work has also been undertaken at Indigenous and non-indigenous cultural sites in the region by local and state government agencies and not-for-profits groups.

The region has significant coastal assets and rivers running south into estuaries adjacent or connected to the ocean. *Maps 1-3* divide the long and relatively thin region into three sections: the west, central and east.

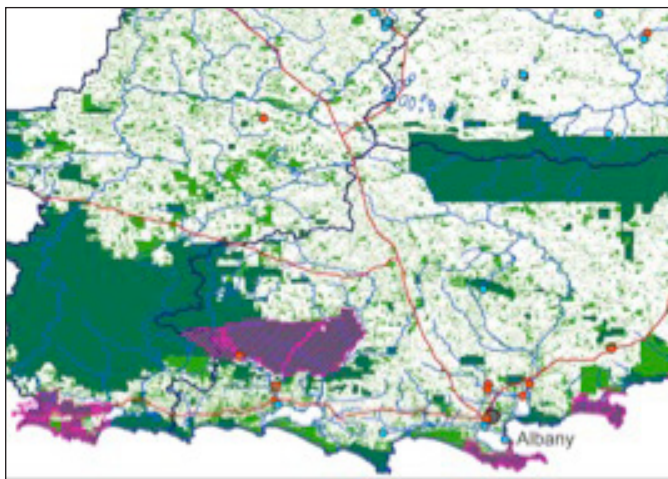
The maps illustrate the small number of settlements and the significant amount of rivers, coastal areas, national parks, reserves and other areas of native vegetation.

They also indicate the fragmentation of natural assets discussed in section 1.5.2. These characteristics pose key challenges to management of cultural heritage - small populations in the middle and east, particularly in the inland areas and cultural sites distributed across the entire region. Locations in pink indicate the importance of landscapes to Aboriginal cultural values - these are also key cultural sites for non-indigenous communities.

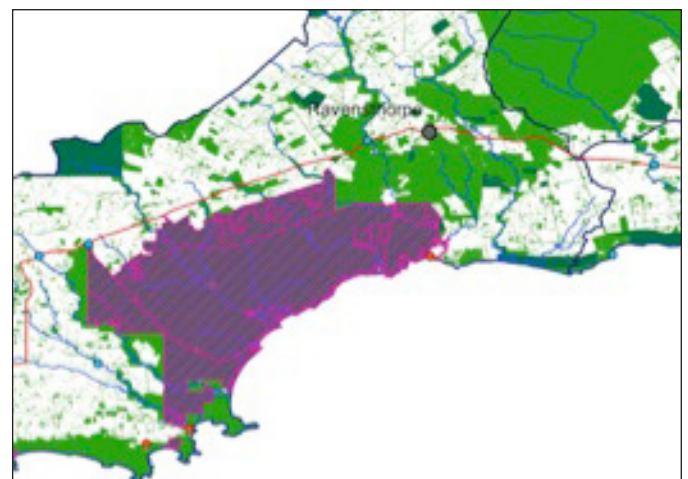
Aboriginal projects undertaken by South Coast NRM to date, are indicated by red dots and possible future projects in blue dots for each sub-region. To protect its investment in Aboriginal cultural heritage site management, South Coast NRM will need to review current and future management plans to ensure outcomes are not compromised by climate change impacts.

Most regional bodies are in the early stages of specific work addressing climate change and cultural heritage. Assessments should be reviewed over the next six months once available.

Communication with the South West Aboriginal Land and Sea Council indicated they are fully occupied by other priorities and have not had opportunity to address issues of climate change and impacts on Aboriginal cultural values (*Sean O'Hara, personal communication, September 2014*). This should also be reviewed in the future.



Map 1: Natural cultural assets, cultural locations and past and possible future Aboriginal cultural heritage projects managed by South Coast NRM – western part of the South Coast region.



Map 2: Natural cultural assets, cultural locations and past and possible future Aboriginal cultural heritage projects managed by South Coast NRM – central part of the South Coast region.



Map 3: Natural cultural assets, cultural locations and past and possible future Aboriginal cultural heritage projects managed by South Coast NRM - eastern part of the South Coast region.

1.7 - Current Adaptive Capacity of Non-Indigenous & Aboriginal Communities in the South Coast

The approach taken is based on the concept of understanding the community's capacity to adapt as a key contributor to that community's relative vulnerability or susceptibility to changing climate.

How a community responds to potential impacts such as a changing climate is dependent on its whole and individual capacity to adapt. It is recognised that the appropriate underlying strategy for adapting to changing climate is to increase resilience (*Duxbury and Hodgson, 2014*).

Increasing the resilience of natural and human systems will lead to increased capacity to successfully adapt to climate change. It's important to understand the current capacity of communities across the region.

Table 7 indicates the general population distribution by LGA across the region and estimates of Aboriginal people living in the region.

This helps identify where Aboriginal communities are located. Further investigation of demographic information has been undertaken in the background paper on socio-economic capacity to adapt to climate change (*Duxbury and Hodgson 2014*).

Population figures in Table 7 reiterate that the region is sparsely populated with a total population of around 62,669 with around 2,193 Aboriginal residents. Moreover, two thirds of this small population is in the coastal part of the west of the region.

		2001	2006	2011
Cranbrook	Total population	1,049	1,098	1,059
	Aboriginal population and percentage of total	10 (1 per cent)	12 (1 per cent)	19 (2 per cent)
Denmark	Total population	4,358	4,380	5,049
	Aboriginal population and percentage of total	24 (1 per cent)	43 (1 per cent)	51 (1 per cent)
Esperance	Total population	12,820	12,675	13,336
	Aboriginal population and percentage of total	502 (4 per cent)	585 (5 per cent)	563 (4 per cent)
Gnowangerup	Total population	1,521	1,325	1,274
	Aboriginal population and percentage of total	106 (7 per cent)	98 (7 per cent)	128 (7 per cent)
Plantagenet	Total population	4,329	4,287	4,684
	Aboriginal population and percentage of total	139 (3 per cent)	87 (2 per cent)	153 (3 per cent)
Albany	Total population	29,571	30,953	32,908
	Aboriginal population and of total	797 (3 per cent)	875 (3 per cent)	1,073 (3 per cent)
Jerramungup	Total population	1,208	1,092	998
	Aboriginal population and percentage of total	18 (1 per cent)	8 (1 per cent)	16 (2 per cent)
Ravensthorpe	Total population	1,419	2,877	2,251
	Aboriginal population and percentage of total	14 (1 per cent)	56 (2 per cent)	32 (1 per cent)
Broomehill-Tambellup	Total population	1,124	1,075	1,110
	Aboriginal population and percentage of total	117 (10 per cent)	79 (7 per cent)	158 (14 per cent)

Table 7: Population of the South Coast region and percentage of Aboriginal population by local government 2001 - 2011 (*ABS community profiles*).

Review and develop management plans for cultural heritage sites

A review of reports published by South Coast NRM and other organisations relating to Aboriginal cultural heritage values and sites, reveal few references to climate change.

It is suggested management plans for sites vulnerable to climate change be reviewed to potentially modify management strategies to take climate change into account.

South Coast LGA are responsible for the management of many cultural heritage sites and South Coast NRM has a role to support them in the development of climate change adaptation strategies, including an assessment of key non-indigenous and Aboriginal cultural heritage sites and values.

Projections of sea-level rise impacts

Specific modelling of sea-level rise and impacts such as flooding, erosion and storm damage has not been undertaken for the region. This modelling would assist with assessing potential impacts on cultural sites as well as other assets and help direct adaptive strategies.

Local government climate change strategies

LGA have a key role to play in management decisions regarding cultural heritage and are strong stakeholders in the South Coast NRM Coastal and Marine theme through the South Coast Management Group. This strong partnership is needed across other themes in relation to cultural heritage sites and landscapes.

It would be helpful for LGAs across the region to have a joint approach to climate change management across all South Coast NRM themes.

For example, adopting standard setbacks for coastal development and the same projections for level of sea-level rise. It has been recommended that a vertical sea-level rise of 0.9m be adopted when planning agencies are considering setback distance and elevations (*Bicknell 2010*).

The shires of Gingin and Dandaragan and the Northern Agricultural Catchments Council initiated a Coastal Hazards Risk Management and Adaptation project to 'assess risks to coastal assets and identify

appropriate risk mitigation options' using the standardised process outlined in the modified WAPC *State Planning Policy 2.6 State Coastal Planning Policy* - www.planning.wa.gov.au/publications/1168.asp. Some South Coast LGAs are taking steps to map flood risk and develop climate change adaptation strategies.

These initiatives are opportunities for South Coast NRM to provide support and facilitate sharing across the region particularly to the smaller shires where resources are limited.

Aboriginal sites not registered or assessed

Millard (2013) highlighted there is likely to be a significant number of unregistered cultural sites across the region.

There are areas where climate change will potentially impact on registered and unregistered sites such as shallow waters and foreshores of estuaries. Assessment of these areas to identify cultural sites is important.

Assessment of current community capacity to adapt to climate change

A recommendation from the South Coast NRM background paper *Socio-economic Dimensions of Climate Change and Capacity to Adapt South Coast Region Western Australia* (Duxbury and Hodgson 2014) was to;

"Seek funding to undertake locally relevant assessments of adaptive capacity in conjunction with analysis of top-down data from ABS census and the like; and facilitate a community self-assessment process for identifying adaptive capacity."

This recommendation applies to the community in general and to the Aboriginal community who should be assessed as a specific client group. This information would then drive actions to build adaptive capacity and community resilience important for protection of cultural heritage across the region.

Communicating climate change to Aboriginal communities

There are a small number of Aboriginal leaders who participate in events aiming to increase knowledge and awareness about the changing climate in the region. A specifically tailored engagement plan would address this gap.

Strong involvement by Aboriginal communities in planning for climate change responses and adaptation

Aboriginal communities have clear views on environmental and cultural site management expressed in management plans and other reports when opportunity is provided.

For example Noongars reported they observe systems are under stress from water abstraction and climate change and want to see restriction on further abstraction.

"We say no to any water being taken at all from these catchment areas because it affects cultural landscapes, which takes in all plants, animals, traditional practices and uses," (Wayne Webb in Goode 2008: 139).

The involvement of Aboriginal people in responding to climate change requires a specific strategy of engagement in adaptive strategy development and implementation.

Opportunities from climate change

The impacts from the changing climate are variable across the region. As indicated in section 1.3 some parts, in particular the central/coastal area may be experiencing increased rainfall particularly in the summer. Indeed, culture is dynamic and climate change may prompt beneficial as well as negative changes (Adger et al. 2013: 114).

A key initiative in the southern agricultural region, linked to building Aboriginal landholder capacity to adapt and take advantage of opportunities arising from climate change, is the Southern Agriculture

Indigenous Landholder Service (SAILS).

This service supports Aboriginal landholders with governance and training to develop environmental management plans along with business and strategic plans for properties.

This planning is based on looking at the capacity of each property and a resource condition assessment to explore possible diverse enterprises this requires incorporation of climate change data risks and opportunity assessment.

SAILS project manager Kelly Flugge emphasises these are the same steps all landholders need to take and there is no need to separate Aboriginal landholders from the wider farming community.

"There is a need to bring people and information together and build the ability of landholders to change so that they make good decisions," (Kelly Flugge, personal communication, September 2014).

In their assessment of climate change impacts the Northern Agricultural Catchment Council reiterated that ability to adapt to the changing climate will be dependent on socio-economic vulnerabilities.

"For Aboriginal communities in particular, vulnerability or opportunity will link to where they can obtain their livelihoods from and whether the changing climate causes a downturn in agriculture or new opportunities arise in the region," (personal communication Peter McKay September 2014).

The same is true for the South Coast region.

References

- Beeton R.J.S., Buckley K. I., Jones G. J., Morgan D., Reichelt R. E., and Trewin D. 2006. Independent report to the Australian Government Minister for the Environment and Heritage. 2006 Australian State of the Environment Committee.
- Adele Millard Consultancy Services, 2013. Cultural Heritage Values Desktop Review Report For Cultural Connections Project. Confidential. A Report For South Coast NRM Inc. August.
- Adger W. N, Barnett J., Brown K., Marshall N. and O'Brien K. 2013. Cultural dimensions of climate change impacts and adaptation. *Nature Climate Change*, VOL 3, February. www.nature.com/natureclimatechange.
- Albrecht, G., Sartore G.M., Connor, L. Higginbotham, N. Freeman, S., Kelly, B., Stain, H, Tonna, A. and Pollard, G. 2007 Solastalgia: the distress caused by climate change. *Australasian Psychiatry* 15, (1) suppl: pp. S95-S98.
- Aurora Environmental. 2014. Climate Change Adaptation and Management – Coastal and Marine - Discussion Paper. South Coast Natural Resource Management Inc.
- Australian Government. 2009. Climate Change Risks to Australia's Coast. A First Pass National Assessment. Department of Climate Change.
- Australian National University. 2009. Implications of climate change for Australia's World Heritage properties: A preliminary assessment. A report to the Department of Climate Change and the Department of the Environment, Water, Heritage and the Arts by the Fenner School of Environment and Society, the Australian National University.
- Bardsley, D.K. and Wiseman, N. D. 2012. Climate change vulnerability and social development for remote Indigenous communities of South Australia. *Global Environmental Change* 22(2012) 713 – 723.
- Bicknell, C. 2010. Sea Level Change in Western Australia – Application to Coastal Planning. Department of Transport. Fremantle, Western Australia.
- Brad Goode & Associates, 2008. Aboriginal Cultural Values Study Of Water Resources For The South Coast Region Of Western Australia. A report prepared for the Department of Water.
- Coffey et al. 2009. Climate Change: Whole of Landscape Analysis of the impacts and options for the South Coast Region. Prepared for South Coast Natural Resource Management by Coffey Environments Pty Ltd.
- Dodson, M. 2007. Indigenous Protected Areas in Australia, International Expert Group Meeting on Indigenous Peoples and Protection of the Environment, Khabarovsk, Russian Federation, 27-29 August, pp2-4 quoted in www.humanrights.gov.au/sites/default/files/content/.../nt.../chap5.doc.
- Donatuto J., Grossman E.E., Konovsky J., Grossman S., and Campbell L. W. 2014. Indigenous Community Health and Climate Change: Integrating Biophysical and Social Science Indicators. *Coastal Management*, 42:355–373.
- Duxbury, L. and Hodgson, N. 2014. Socio-economic Dimensions of Climate Change and Capacity to Adapt South Coast Region Western Australia. Prepared for South Coast NRM.
- Fry, Julia. 2014. Background Paper – Climate Change and the South Coast Region. Draft Prepared for South Coast NRM.

Gilfillan, S. 2014. Climate Change and Biodiversity – Background Paper. Prepared for South Coast NRM.

Green, D. and Minchin, L. 2014. Living on Climate-Changed Country: Indigenous Health, Well-Being and Climate Change in Remote Australian Communities. *EcoHealth* 11, 263–272.

Guilfoyle, David. 2011. Draft Aboriginal Cultural Heritage Management Plan For Southern Section Of Kwoorabup Beelia (Denmark River). Applied Archeology Australia. Shire of Denmark and Government of WA Department of Indigenous Affairs. July.

Gunby, C. 2014 Climate Change and Water Resources, South Coast Region of Western Australia. South Coast NRM. Albany.

Inglis, J., Whittaker, S., Dimitriadis, A. and Pillora, S. 2014. Climate Adaptation Manual for Local Government - Embedding resilience to climate change. Australian Centre of Excellence for Local Government, University of Technology, Sydney.

Standing Committee on Climate Change, Water, Environment and the Arts. 2009. Managing our Coastal Zone in a Changing Climate. House of Representatives. Canberra, ACT, Australia.

Appendix 1: Cultural Heritage Assessment and Management Plans Undertaken

Report Name	Contract/ Project Code	End Date	Noongar Group
Cultural heritage assessment of the Quaranup (Vancouver) Peninsula, Albany, 2011.	GO27	23-Mar-12	Minang
Wilson Inlet cultural management plan, 2008.	04SC1-14ha	31-Dec-08	Pibulman
Preliminary archaeological heritage assessment and community recommendations for proposed management actions at Culham Inlet and Phillips River Reserve, 2011.	10SC-C93	30-Apr-11	Wudjari
Anderson Lake cultural management plan, 2008.	04SC1-14ha	31-Dec-08	Minang
The Kwoorabup Walk Trail cultural heritage management plan, 2009.	04SC1-12Z	30-Jun-10	Minang
Cultural heritage management plan Lake Pleasant View, 2009.	04SC1-12Z	30-Jun-10	Minang
Cultural heritage assessment report and biodiversity conservation actions, Tookle Jenna, Shire of Esperance, 2010.	04SC1-12Z	17-May-10	Njunga
Oyster Harbour Fish Traps site community management plan, 2011.	GO27	01-Mar-11	Minang
Archaeological survey at Anderson Lake, 2009.	04SC1-14ha	01-Apr-09	Minang

to Date through South Coast NRM

Sub Region	Description	Project Objective
Albany Hinterland	Presentation of the outcomes of a heritage assessment of Quaranup (Vancouver) Peninsula. Five days of fieldwork was carried out. Outcomes will be used to seek further funding, enhance management of the area and further traditional knowledge.	Specific site mgmt plan
Albany Hinterland	The plan aims to document Noongar cultural and community values associated with Wilson Inlet, communicate Noongar perspectives on key management issues for the Inlet, and to provide a mechanism for ongoing Noongar engagement in managing Wilson Inlet.	Specific site mgmt plan
Fitzgerald Biosphere	The report outlines the workshop held by South Coast NRM with Traditional Owners, RAIN, Culham Foreshore Management Group reps and Applied Archaeology Australia. Management issues and locations of proposed upgrades and facilities were discussed.	Specific site mgtm plan
Albany Hinterland	The plan is an overview of the actions undertaken during the project, as well as an outline of future plans for the Anderson Lake cultural landscape. The report lists the issues of concern identified and the corresponding solutions.	Specific site mgmt plan
Albany Hinterland	The plan outlines heritage protection and restoration actions implemented during the development of the Kwoorabup Walk Trail, a low impact 2.5km walk path located along the eastern fringes of the Denmark River foreshore.	Specific site mgmt plan
Albany Hinterland	The plan outlines the management and conservation processes, the short-term implementation plan, partners and stakeholders, site description, a summary of the conservation values and the condition of the heritage values.	Specific site mgmt plan
Esperance Sandplain	The report is a preliminary assessment of the heritage values and degrading environmental processes. Undertaken by Applied Archaeology Australia, it outlines some key actions including the development of a heritage plan for the area.	Landscape heritage features etc
Albany Hinterland	The report was designed to enable the cultural heritage protection, management and interpretation of the fish traps. It describes the site's cultural heritage significance, outlines the threats to the site and develops site management options.	Specific site mgmt plan & landscape heritage features etc
Albany Hinterland	This report provides background archaeological information to assist site management. It is not a heritage clearance report, nor is it sufficient for any proposed development to proceed on any Aboriginal sites identified.	Landscape heritage features etc.

Appendix 1: Cultural Heritage Assessment and Management Plans Undertaken

Report Name	Contract/ Project Code	End Date	Noongar Group
Field visit report Yakamia Creek.	10SC-C93	06-Jun-12	Minang
Cultural heritage assessment and NRM project development at Warriup and Pallinup.	10SC-C93	26-Jun 12	Minang
Mount Lindesay cultural connections project, 2012.	10SC-C93	30-Jun-12	Pibulman
Cultural heritage assessment of the Quaranup (Vancouver) Peninsula, Albany, phase 2, 2013.	201343	30-Jun-13	Minang
Cultural values of Wellstead Estuary report, 2012.	11SC-C110	30-Jun-13	Koren
Denmark River and Wilson Inlet site visit report, 2012.	10SC-C93	18-Jun-12	Pibulman
Manypeaks, Lake Pleasant View cultural site visit report, 2012.	10SC-C93	19-Jun-12	Minang
Yonga Quagi Beach site visit report, 2012.	10SC-C93	21-Jun-12	Njunga
Marbeleerup (Mt Ridley) rock art protection and management project.	10SC-C93	31-Jul-13	Njunga
Albany Heritage and NRM project by David Guilfoyle.		Mar 2008	Minang

to Date Through South Coast NRM

Sub Region	Description	Project Objective
Albany Hinterland	Community meeting with stakeholders to discuss works at Yakamia Creek, Barnesby Drive and seek input into management of the system.	Specific site mgmt plan
Albany Hinterland	Report on two, one-day site visits to Warriup and Pallinup to conduct preliminary cultural heritage and NRM assessments, reconnect elders with land, and make management recommendations.	Landscape heritage features etc specific site mgmt plans
Albany Hinterland	This project involved local Traditional Owners and Applied Archaeology International in a two-day field assessment. The assessment identified a need to involve further desktop research, archaeologists and ethnobotanists.	Landscape heritage features etc
Albany Hinterland	Quaranup is a multi-year project aiming to engage the Albany Noongar community, South Coast NRM and the City of Albany in ongoing site management. Phase two assessed the area for cultural sites, liaising and developing skills in the Noongar community.	Landscape heritage features etc
Fitzgerald Biosphere	This project coordinated and delivered Aboriginal community consultation regarding the cultural values and significance of Wellstead Estuary and surrounding areas.	Landscape heritage features etc
Albany Hinterland	Report on site visits to the Denmark River and Wilson Inlet Poison Point sites by Traditional Owners and local stakeholders.	Landscape heritage features etc
Albany Hinterland	This report documents the cultural site visits. The purpose was to reconnect Elders to country, report to community on completed on-ground works, record TEK, record cultural significance and document future actions.	Landscape heritage features etc and specific site mgmt plan
Esperance Sandplain	Visited Yonga Quagi Beach, Esperance with a small group of Elders/TOs and Ceonie Clinch from DIA. Ceonie's purpose was to record information and identify sites to be listed sited with DIA or for further cultural heritage surveys.	Landscape heritage features etc
Esperance Sandplain	Representatives from six TO families went on a site survey of Marbeleerup. Site works done included sanding and re-painting of the signs, assessment of the damage to the rock art motifs and a discussion for future management actions.	Landscape heritage features etc, on the ground, site mgmt plans
Albany Hinterland	Restoring Connections: progress report on the projects focused on two areas within the City of Albany - Maxwell Street Reserve and Quaranup.	Site mgmt plans; on ground works

Appendix 1: Cultural Heritage Assessment and Management Plans Undertaken

Report Name	Contract/ Project Code	End Date	Noongar Group
Aboriginal cultural values study of water resources for the South Coast region, Brad Goode and Associates.	Prepared for DoW	July 2008	
Report on the results of a cultural heritage survey of nominated areas within Stokes Inlet National Park by Eureka Archaeological Research and Consulting UWA.	SCRIPT	Jan 2007	
Gondwana Link - Caring for Country.	04SCI-01j	Dec 2008	
Restoring Connections update and progress report.	SCNRM/ SWCC	3 Jan 2008	
Blue Lake eco-management plan by Myles Mitchell for SCNRM DIA Walgenup Aboriginal Corporation.		2008	Pibulman
Bindup Heritage report: A Noongar heritage place on the Oldfield River Shire of Esperance by Myles Mitchell in collaboration with Esperance Traditional Owners.	SCNRM/DIA	2008	
Assessment of Aboriginal occupation on Middle Island, with comments on the archaeological significance of islands in the Archipelago of the Recherche, Charles E. Dortch.	SCRIPT	2007	Minang
Wagin Lakes Heritage and NRM project.	SCRIPT/ SWCC	2005	Pibulman

to Date through South Coast NRM

Sub Region	Description	Project Objective
South Coast Region	An Aboriginal Cultural Values Study Of Water Within The South Coast Region of WA.	Landscape heritage values and features etc
Esperance	<p>Investigate locations nominated by representatives of the Esperance Noongar community and identify Aboriginal sites as defined by section 5 of the Aboriginal Heritage Act 1972.</p> <p>Document the understanding of Indigenous cultural values inherent in the Stokes Inlet landscape and provide practical suggestions on the protection and enhancement of Indigenous values and strategies for site management in the survey area.</p>	Landscape heritage features etc specific site mgmt plan
Albany Hinterland	Report on Activities to date at the Nowanup Meeting Place	Report on activities.
Cross-Regional	Report on activities for Southern Forests Project (cross-regional with SWCC); Albany Heritage and NRM Project; Esperance Heritage and NRM Project; Gnowangerup Heritage and NRM Project; Manypeaks; Tambellup; Carrolup/Marribank Mission; Peel Estuary; Wagin Heritage and NRM Project; Pallinup Project; Kybra Rock Art Restoration; Kojonup.	Report on activities
Albany Hinterland	Instigated by Wayne Webb, a Traditional Owner from the Pibulmun as Noongar cultural custodians of south-west WA to identifying threats to Blue Lake as a significant ecological and cultural landscape in the region and instigate projects to protect it.	Landscape heritage features etc site mgmt plan and on-ground works
Esperance	Restoring Connection project. Initial archaeological investigation and cultural mapping conducted. On-ground works by Kepa Kurl controlling access, fencing etc.	Landscape heritage features etc site mgmt plan and on-ground works
Esperance	Restoring Connection project. Field survey on Middle Island assesses Aboriginal occupation on Middle Island and evaluates the archaeological potential of islands in the Archipelago of the Recherche for providing additional insight into Aboriginal cultural history in the general region.	Landscape heritage features etc
Albany Hinterland	<p>Restoring Connection project. Wait-Jen Trail - Ruben's Crossing boardwalk and bridge construction by Green Skills with KEEDAC trainees.</p> <p>Also report on the Mt Barker Noongar community tour to the Wagin Native Reserve and the Wait-jen Lakes Noongar Heritage Trail to learn from Wagin Noongar community, expose young people to their culture, unite the Mt Barker Noongar community.</p>	On-ground works; Capacity building and connection to country.

Appendix 1: Cultural Heritage Assessment and Management Plans Undertaken

Report Name	Contract/ Project Code	End Date	Noongar Group
Restricted access cultural heritage assessment of Nornalup townsite by David Guilfoyle.	SCNRM/ DIA/DEC	July 2009	Pibulman
South Coast heritage restoration project 2007-2008 - summary report by Myles Mitchell.	2004SCI-14ha/ SCNRM/DIA	2008	
South Coast heritage assessment project by Myles Mitchell	2104SCI – 14ha SCRIPT/DIA	2006	
Draft Windermere & Yoorl Park Aboriginal heritage restoration plan by Adam Wolfe & Associates .	2304SCI-12Z SCNRM/DIA	May 2010	Minang
Noongar Biodiversity Conservation Land Care Project	2504SCI-12Z SCNRM/DIA	2010	
Gnowangerup Springs Aboriginal heritage survey report part 1 by Fiona Bishop, David Guilfoyle for Gnowangerup Shire/ Gnowangerup Aboriginal Corporation.	SCNRM/ SWCC/ GSDC;/DIA	June 2007	
Baarndiup (Bandy Creek) rehabilitation plan by Doc Reynolds and David Guilfoyle.	3004SCI-14v	June 2008	
Tambellup heritage and NRM project. Project brief and update by David Guilfoyle.	SCRIPT/ SWCC	Undated	

to Date Through South Coast NRM

Sub Region	Description	Project Objective
Albany Hinterland	<ul style="list-style-type: none"> • Desktop assessment of Noongar cultural heritage sites and values in the study area. • Archaeological and ethnographic field surveys with Noongar custodians from the area to identify significant sites and heritage values for site protection and restoration; • Identify themes and interpretation strategies to promote Noongar heritage in the area. • Heritage management recommendations for Noongar engagement in the Nornalup Character Study and local government and DEC planning strategies. • Heritage assessment of a proposed foreshore boardwalk. 	Landscape heritage features etc specific site mgmt plan
South Coast Region	Report on stage 2, the first implementation stage of the South Coast heritage restoration project completed between October 2007 and July 2008.	On-ground works
South Coast Region	First component of extended cultural heritage site protection and restoration initiative. Compiles the results of initial community consultation and site assessment to serve as a resource for cultural heritage management in the region, with recommendations for management. Esperance Sandplain; Esperance Mallee; Kent-Frankland region; Wilson Inlet region; North Stirlings-Pallinup region; Albany Hinterland.	Landscape heritage features etc site mgmt plans
Albany Hinterland	Incomplete report.	
South Coast Region	Report on NRM work program with 6six Noongar land care trainees through Skill Hire at five heritage locations in the South Coast region plus additional biodiversity work at other DEC sites. Focus primarily on weed management, erosion control and site protection at several sites in the Denmark and Albany area	On-ground works.
Esperance	Restoring Connection project. Results of the ethnographic and archaeological assessment of the Gnowangerup Springs area.	Landscape heritage features etc
Esperance	Management plan post-major flooding event of Jan 2007. Recommendations of actions with cost estimates to implement.	Landscape heritage features etc site mgmt plans
Tambellup	Restoring Connections project. A brief case study on Tambellup to examine the relationships between Noongar history and heritage surrounding rural towns to serve as a model for integrating local cultural heritage values and places into town planning. Identification of cultural values and concerns.	Heritage values and features etc

Appendix 2: Town Planning Scheme Heritage Listing & Municipal Inventory

Place Name	Location	Listings
Point Hillier Cairn	Point Hillier Denmark	Town Planning Scheme Municipal Inventory
Karri trees	Lights Road verges, Denmark	Town Planning Scheme Municipal Inventory
Urban bushland/Frail and aged Lodge grounds	Teasdale Street Denmark	Town Planning Scheme Municipal Inventory
Bow River	South Coast Highway, Bow Bridge	Municipal Inventory
Devon and Cornwall Group Park, Styx River Settlers Park, Group 114 Settlement Park.	Fernley Road Denmark	Town Planning Scheme Municipal Inventory
Coronation Park	South Coast Hwy Denmark	Municipal Inventory
Former Methodist Church, Denmark (Red Cross centre and shop)	Cnr Price & Mitchell Streets, Denmark	Town Planning Scheme Municipal Inventory
Karri and marri trees on Mt Barker Road	Churchill Road to South Coast Highway, Denmark	Municipal Inventory
Bernard Bellanger's home	54 Riverside Drive, Frankland	Municipal Inventory
Denmark River (Kwoorabup Beela)	Denmark River, Denmark	Municipal Inventory
Scotsdale Road Bridge (Millar's Timber Co. Tramway Bridge)	Scotsdale Road, Denmark	Municipal Inventory/Cl by the National Trust, R of the National Estate, S Lge Timber Street Surve Planning Scheme
William Bay National Park	William Bay Road, Denmark	Register of the National
Urban bushland, Denmark District High School Reserve	Bounded Brazier/Buckley/ Patterson & Mitchell Roads, Denmark	Town Planning Scheme Municipal Inventory
Urban Bushland River Reserve	Bounded by Holling Street/ Golf Course & Trot Track Denmark	Town Planning Scheme Municipal Inventory
Mt Shadforth Nature Reserve	409 Illsley Drive, Denmark	Municipal Inventory
Uniting Church	995 South Coast Hwy, Denmark	Municipal Inventory
Frankland River & Nornalup Inlet (Kwakoorillup Beela)	South Coast Highway, Nornalup	Municipal Inventory
Karri trees	Both sides of South Coast Hwy, between Agric School & Hwy Bridge, Denmark	Town Planning Scheme Municipal Inventory

Listing by Local Government Authority: DENMARK

	Custodian	Condition	Place No.	Is Demolished
&	Shire of Denmark/ Heritage Council		4401	FALSE
&	Heritage Council/Shire of Denmark		14325	FALSE
&	Heritage Council		14416	FALSE
	Heritage Council/Shire of Denmark		23796	FALSE
/	Heritage Council/Shire of Denmark		14308	FALSE
	Shire of Denmark/Heritage Council		23797	FALSE
/	Shire of Denmark/Heritage Council	Very good/good	14403	FALSE
	Shire of Denmark/Heritage Council		23798	FALSE
	Shire of Denmark/Heritage Council		23800	FALSE
	Shire of Denmark/ Heritage Council		23801	FALSE
classified register statewide, Town	Shire of Denmark/ Heritage Council	Very poor	4636	FALSE
Estate	Heritage Council		18748	FALSE
/	Shire of Denmark/ Heritage Council		14413	FALSE
/	Shire of Denmark/ Heritage Council		14415	FALSE
	Shire of Denmark/ Heritage Council		23805	FALSE
	Shire of Denmark/ Heritage Council	Good	23806	FALSE
	Shire of Denmark/ Heritage Council		3807	FALSE
,	Heritage Council/Shire of Denmark		14323	FALSE

Appendix 2: Town Planning Scheme Heritage Listing & Municipal Inventory L

Place Name	Location	Listings
Tobacco Kiln	6503 South Coast Hwy, Nornalup	Municipal Inventory
Denmark Community Park (Denmark Research Station & manager's residence (fmr), Denmark State Farm)	Scotsdale Road, Denmark	RHP - Does not warrant assessment, classified by the National Trust
Jackson's Place (Gilleywhette, Ross Trevor)	185 Howe Road, Denmark	Town Planning Scheme
Jackson's Place (Gilleywhette, Ross Trevor)	185 Howe Road, Denmark	Municipal Inventory
Morrison's Newsagency (Nockolds Shops)	30 South Coast Hwy, Denmark	Municipal Inventory
Morrison's Newsagency (Nockolds Shops)	30 South Coast Hwy, Denmark	Heritage Council
Denmark Post Office (fmr) (Pre-Primary Centre)	Cnr Crellin Rd & Inlet Drive, Denmark	Town Planning Scheme
Denmark Post Office (fmr) (Pre-Primary Centre)	Cnr Crellin Road & Inlet Drive Denmark	Municipal Inventory
Hamilton Road Bridge (fmr) over Denmark River (MRWA 4499)	Hamilton Rd off Scotsdale Road over Denmark River Denmark	Statewide Lge Timber Str Survey
Strickland Street Precinct	Strickland Street, Denmark	Municipal Inventory
Strickland Street Precinct	Strickland Street, Denmark	Heritage Council
Mt Hallowell Reserve	Denmark	Municipal Inventory
Mt Hallowell Reserve	Denmark	Register of the National Estate
St Mary's RC Church	South Coast Hwy, Denmark	Municipal Inventory
St Mary's RC Church	South Coast Hwy, Denmark	Town Planning Scheme
Denmark River Traffic Bridge (The Traffic Bridge, No 86A)	South Coast Hwy, Denmark	Municipal Inventory
Denmark River Traffic Bridge (The Traffic Bridge, No 86A)	South Coast Hwy, Denmark	Municipal Inventory, Town Planning Scheme
Headmaster's House (fmr) (Alfred & Eva Carson Hostel;, Infant Health Centre; Waiting Room;)	4 Brazier Street, Denmark	Municipal Inventory

isting by Local Government Authority: DENMARK

Custodian	Condition	Place No.	Is Demolished
Shire of Denmark/Heritage Council	Very Poor to fair	23810	FALSE
Heritage Council		16291	FALSE
Heritage Council		14321	FALSE
Shire of Denmark	Fair	14321	FALSE
Shire of Denmark	Good	23814	FALSE
		23814	FALSE
Heritage Council		680	FALSE
Shire of Denmark	Very good	680	FALSE
Heritage Council	Good - well maintained	11468	FALSE
Shire of Denmark	Fair-Good	23815	FALSE
		23815	FALSE
Shire of Denmark		15929	FALSE
Heritage Council		15929	FALSE
Shire of Denmark	Very good	676	FALSE
Heritage Council		676	FALSE
Shire of Denmark	Good	14307	FALSE
Heritage Council		14307	FALSE
Shire of Denmark	Very good	14312	TRUE

Appendix 2: Town Planning Scheme Heritage Listing & Municipal Inventory L

Place Name	Location	Listings
Headmaster's House (fmr) (Alfred & Eva Carson Hostel;, Infant Health Centre; Waiting Room;)	4 Brazier Street, Denmark	Town Planning Scheme Does not warrant assess
The Rectory (Anglican Rectory)	39 Scotsdale Road, Denmark	Town Planning Scheme
The Rectory (Anglican Rectory)	39 Scotsdale Road, Denmark	Municipal Inventory
Denmark Hotel	30 Hollings Road, Denmark	Heritage Council
Denmark Hotel	30 Hollings Road, Denmark	Municipal Inventory
Plane Tree	Mitchell Street, Denmark	Town Planning Scheme
Plane Tree	Mitchell Street, Denmark	Municipal Inventory
Clanwilliam Barn (Wylie Place)	South Coast Hwy, Nornalup	Town Planning Scheme, Municipal Inven
R & I Bank (Bankwest)	77 Strickland Street, Denmark	Town Planning Scheme Bank Survey
R & I Bank (Bankwest)	77 Strickland Street, Denmark	Municipal Inventory
Berridge Park	Hollings Road, Denmark	Municipal Inventory
Berridge Park	Hollings Road, Denmark	Town Planning Scheme
Hazelvale School and teachers residence	916 Hazelvale Road, Hazelvale	Municipal Inventory
Hazelvale School and teachers residence	916 Hazelvale Road, Hazelvale	
Myers Packing Shed	28 Myers Road, Denmark	
Myers Packing Shed	28 Myers Road, Denmark	Municipal Inventory
Karri Cottage	88 Riverside Drive, Nornalup	Municipal Inventory
Karri Cottage	88 Riverside Drive, Nornalup	
The Bungalow - Nornalup	South Coast Hwy. Nornalup	Town Planning Scheme
The Bungalow - Nornalup	South Coast Hwy. Nornalup	Municipal Inventory
Kentdale Hall	Parker Road, Kentdale	Municipal Inventory
Kentdale Hall	Parker Road, Kentdale	Town Planning Scheme
Parry's Beach Settlement	Parry's Beach, Denmark	Municipal Inventory
Parry's Beach Settlement	Parry's Beach, Denmark	Municipal Inventory, To Planning Scheme

isting by Local Government Authority: DENMARK

	Custodian	Condition	Place No.	Is Demolished
RHP - ment	Heritage Council		14312	FALSE
	Heritage Council		3267	FALSE
	Shire of Denmark	Fair	3267	FALSE
			23826	FALSE
	Shire of Denmark	Good	23826	FALSE
	Heritage Council		14400	FALSE
	Shire of Denmark		14400	FALSE
ntory	Heritage Council		14302	FALSE
,Statewide	Heritage Council		681	FALSE
	Shire of Denmark	Good	681	TRUE
	Shire of Denmark		14300	FALSE
	Heritage Council		14300	FALSE
	Shire of Denmark	School House poor, teachers residence good	23833	FALSE
	Heritage Council		23833	FALSE
	Heritage Council		23835	FALSE
	Shire of Denmark	Fair	23835	FALSE
	Shire of Denmark		23836	FALSE
	Heritage Council		23836	FALSE
	Heritage Council		14409	FALSE
	Shire of Denmark	Very good	14409	FALSE
	Shire of Denmark	Very good	14334	FALSE
	Heritage Council		14334	FALSE
	Shire of Denmark	Fair	14398	FALSE
own	Heritage Council		14398	FALSE

Appendix 2: Town Planning Scheme Heritage Listing & Municipal Inventory L

Place Name	Location	Listings
Denmark Fire Station	Peace Street, Denmark	Fire & Rescue Service H Inventory
Peace Pine Tree at District Hospital	Cnr Horsley & Scotsdale roads, Denmark	Municipal Inventory
Peace Pine Tree at District Hospital	Cnr Horsley & Scotsdale roads, Denmark	Town Planning Scheme, War Memorial Survey
Country Women's Association Rest Rooms, Denmark	Mitchell Street, Denmark	Town Planning Scheme
Country Women's Association Rest Rooms, Denmark	Mitchell Street, Denmark	Municipal Inventory
Moreton Bay Fig Tree	Strickland Street, Shopping Complex Denmark	Municipal Inventory
Moreton Bay Fig Tree	Strickland Street, Shopping Complex, Denmark	Town Planning Scheme
Former Denmark Town Hall, now Seventh Day Adventist Church, Lonsborough Hall	Mitchell Street, Denmark	Municipal Inventory
Former Denmark Town Hall, now Seventh Day Adventist Church, Lonsborough Hall	Mitchell Street, Denmark	Town Planning Scheme
Boat and Angling Club slipway	34 South Coast Hwy, Denmark	Municipal Inventory
Boat and Angling Club slipway	34 South Coast Hwy, Denmark	
Mrs Church's house	61 South Coast Hwy, Denmark	Town Planning Scheme
Mrs Church's house	61 South Coast Hwy Denmark	Municipal Inventory
Wilkie's (Cook's, Orana)	26 Riverside Drive, Nornalup	Municipal Inventory
Wilkie's (Cook's, Orana)	26 Riverside Drive, Nornalup	
Karri trees	South Coast Hwy, between tavern & Buckley Street, Denmark	Town Planning Scheme, Inventory
Karri trees	South Coast Hwy, between tavern & Buckley Street,	Municipal Inventory
Scotsdale Hall	Scotsdale Road, Denmark	Municipal Inventory, Town Planning Scheme
Scotsdale Hall	Scotsdale Road, Denmark	Municipal Inventory

isting by Local Government Authority: DENMARK

	Custodian	Condition	Place No.	Is Demolished
Heritage	Heritage Council		14496	FALSE
	Shire of Denmark		14309	FALSE
Statewide	Heritage Council		14309	FALSE
	Heritage Council		14303	FALSE
	Shire of Denmark	Fair	14303	FALSE
	Shire of Denmark		14336	FALSE
	Heritage Council		14336	FALSE
	Shire of Denmark	Very good	14407	FALSE
	Heritage Council		14407	FALSE
	Shire of Denmark		23850	FALSE
	Heritage Council		23850	FALSE
	Heritage Council		14318	FALSE
	Shire of Denmark	Good	14318	FALSE
	Shire of Denmark	External: Good. Internal: Fair	23852	FALSE
	Heritage Council		23852	FALSE
Municipal	Heritage Council		14324	FALSE
	Shire of Denmark		14324	FALSE
own	Heritage Council		14406	FALSE
	Shire of Denmark	Very good	14406	FALSE

Appendix 2: Town Planning Scheme Heritage Listing & Municipal Inventory L

Place Name	Location	Listings
Denmark Arts Council offices (Infant Health Centre)	41 Mitchell Street, Denmark	Municipal Inventory
Denmark Arts Council offices (Infant Health Centre)	41 Mitchell Street, Denmark	
National Bank	Strickland Street, Denmark	
Karri tree	South Coast Hwy, Denmark	Municipal Inventory
Karri tree	South Coast Hwy, Denmark	
Poison Point	Inlet Drive, Denmark	
Poison Point	Inlet Drive, Denmark	Municipal Inventory
Sappers Bridge	Frankland River, Tingledale	
Sappers Bridge	Frankland River, Tingledale	Municipal Inventory
Wynella Museum	South Coast Hwy Denmark	Town Planning Scheme
Wynella Museum	South Coast Hwy Denmark	Municipal Inventory
Berridge Building - Denmark Environment Centre & mural	33-37 Strickland Street, Denmark	Municipal Inventory
Berridge Building - Denmark Environment Centre & mural)	33-37 Strickland Street, Denmark	
Denmark War Memorial (soldiers' memorial)	Cnr Hollings Road & South Coast Hwy, Denmark	Municipal Inventory
Denmark War Memorial (soldiers' memorial)	Cnr Hollings Road & South Coast Hwy, Denmark	Town Planning Scheme Statewide War Memorial
Tree Top Walk - Valley of the Giants	Valley of the Giants Road - 4km from Nornalup	Municipal Inventory
Tree Top Walk - Valley of the Giants	Valley of the Giants Road 4km from Nornalup	Town Planning Scheme
Nornalup Tea House (Karri Moar/Shaw's)	6684 South Coast Hwy, Nornalup	
Nornalup Tea House (Karri Moar/Shaw's)	6684 South Coast Hwy, Nornalup	Municipal Inventory
Denmark Police Station	South Coast Hwy, Denmark	RHP - Does not warrant assessment
Forest Hill and Moriarty - Camballup Trails	Hay Land District to the west and south-west of Mt Barker	Municipal Inventory
Forest Hill and Moriarty - Camballup Trails	Hay Land District to the west and south-west of Mt Barker	Heritage Council

isting by Local Government Authority: DENMARK

	Custodian	Condition	Place No.	Is Demolished
	Shire of Denmark	Good	23853	FALSE
	Heritage Council		23853	FALSE
	Heritage Council	Demolished	679	TRUE
	Shire of Denmark		24428	FALSE
	Heritage Council		24428	FALSE
	Heritage Council		23855	FALSE
	Shire of Denmark		23855	FALSE
	Heritage Council		23857	FALSE
	Shire of Denmark		23857	FALSE
	Heritage Council		14424	FALSE
	Shire of Denmark	Very good	14424	FALSE
	Shire of Denmark	Good	23859	FALSE
	Heritage Council		23859	FALSE
	Shire of Denmark	Good	14408	FALSE
	Heritage Council		14408	FALSE
	Shire of Denmark		14411	FALSE
	Heritage Council		14411	FALSE
	Heritage Council		23867	FALSE
	Shire of Denmark	Good	23867	FALSE
	Heritage Council	Good	17441	FALSE
	Shire of Denmark		23870	FALSE
			23870	FALSE

Appendix 2: Town Planning Scheme Heritage Listing & Municipal Inventory L

Place Name	Location	Listings
Urban Bushland Patterson Street Reserve	Patterson Steet, Denmark	Town Planning Scheme
Urban Bushland Patterson Street Reserve	Patterson Street, Denmark	Municipal Inventory
Denmark Pre-Primary Unit 1	South Coast Hwy Denmark	Municipal Inventory, Town Planning Scheme
Yurunga residence	46 Hollings Road, Denmark	Municipal Inventory
Yurunga residence	46 Hollings Road, Denmark	Heritage Council
Karri Creek Road Bridge (MRWA 103a)	South Western Hwy, Denmark	RHP - To be assessed, Statewide Lge Timber Str Survey
House	24 Price Street, Denmark	Town Planning Scheme
House	24 Price Street, Denmark	Municipal Inventory
House	90 Strickland Street, Denmark	Municipal Inventory
House	90 Strickland Street, Denmark	Town Planning Scheme
Wilson Inlet	Inlet Drive, Denmark	Municipal Inventory
Wilson Inlet	Inlet Drive, Denmark	Heritage Council
Hay River Railway Bridge	Adjacent to South Coast Hwy, across Hay River, Denmark	Statewide Lge Timber S
Denmark Primary School (Denmark Mill School; Denmark Junior High, Denmark District High School)	Mitchell Street, Denmark	Municipal Inventory
Denmark Primary School (Denmark Mill School; Denmark Junior High, Denmark District High School)	Mitchell Street, Denmark	Town Planning Scheme
Former Denmark Railway Station, now Bowling Club	Morgan Road, Denmark	Town Planning Scheme
Former Denmark Railway Station, now Bowling Club	Morgan Road, Denmark	Municipal Inventory
Denmark Uniting Church	Cnr Price & Mitchell streets, Denmark	Town Planning Scheme, Municipal Inventory
Mambray Park (Hallowell Park, Winniston Farm)	732 Ocean Beach Road, Denmark	Municipal Inventory
Mambray Park (Hallowell Park, Winniston Farm)	732 Ocean Beach Road, Denmark	Municipal Inventory
Edinboro House	31 South Coast Hwy, Denmark	Municipal Inventory

Listing by Local Government Authority: DENMARK

	Custodian	Condition	Place No.	Is Demolished
	Heritage Council		14422	FALSE
	Shire of Denmark		14422	FALSE
own	Heritage Council		14305	FALSE
	Shire of Denmark	Good	23871	FALSE
			23871	FALSE
Statewide	Heritage Council	Good	15402	FALSE
	Heritage Council		14316	FALSE
	Shire of Denmark	Very good	14316	FALSE
	Shire of Denmark	Very good	14319	FALSE
	Heritage Council		14319	FALSE
	Shire of Denmark		23877	FALSE
			23877	FALSE
tr Survey	Heritage Council	Poor	3516	FALSE
	Shire of Denmark	Very good	9798	FALSE
	Heritage Council		9798	FALSE
	Heritage Council		14301	FALSE
	Shire of Denmark	Good	14301	FALSE
Municipal	Heritage Council		678	FALSE
	Shire of Denmark	Sound	23883	FALSE
	Heritage Council		23883	FALSE
	Shire of Denmark	Good	23886	FALSE

Appendix 2: Town Planning Scheme Heritage Listing & Municipal Inventory L

Place Name	Location	Listings
Edinboro House	31 South Coast Hwy, Denmark	Municipal Inventory
Group School	41 Mitchell Street, Denmark	Municipal Inventory
Group School	41 Mitchell Street, Denmark	Municipal Inventory
Denmark River Railway Bridge	Cnr Hollings Road & Inlet Drive, Denmark	RHP - To be assessed, State Lge Timber Str Survey, Town Planning Scheme
Denmark River Railway Bridge	Cnr Hollings Road & Inlet Drive, Denmark	Municipal Inventory
Commercial Building (1)	28 Hollings Street, Denmark	Municipal Inventory
Commercial Building (1)	28 Hollings Street, Denmark	
Shingle Hut - Baines Property	723 South Coast Hwy, Bow Bridge	Town Planning Scheme
Shingle Hut - Baines Property	723 South Coast Hwy, Bow Bridge	Municipal Inventory
Kordabup Beela (Styx River)	Styx River Road Kordabup	Municipal Inventory
Kordabup Beela (Styx River)	Styx River Road Kordabup	
St Leonard's Anglican Church (Mission Church)	Cnr Strickland & Mitchell streets, Denmark	Municipal Inventory
St Leonard's Anglican Church (Mission Church)	Cnr Strickland & Mitchell streets, Denmark	Register of the National Estate, Town Planning Scheme
Harewood Forest	Scotsdale Road, 8km NW of Denmark	Town Planning Scheme
Harewood Forest	Scotsdale Road, 8km NW of Denmark	Municipal Inventory
Old Town Dam (Millar's Dam) (Butter Factory Dam)	Off Mt Shadforth Road/Peace Street, Denmark	Town Planning Scheme
Old Town Dam (Millar's Dam) (Butter Factory Dam)	Off Mt Shadforth Road/Peace Street, Denmark	Municipal Inventory
Original Peaceful Bay settlement	Peaceful Bay Road, Peaceful Bay	Town Planning Scheme, To be assessed
Original Peaceful Bay settlement	Peaceful Bay Road, Peaceful Bay	Municipal Inventory
Craig's Building (Doctor's Surgery)	66-70 Strickland Street, Denmark	Municipal Inventory
Craig's Building (Doctor's Surgery)	66-70 Strickland Street, Denmark	Town Planning Scheme

isting by Local Government Authority: DENMARK

	Custodian	Condition	Place No.	Is Demolished
	Heritage Council		23886	FALSE
	Heritage Council		23887	FALSE
	Shire of Denmark	Good	23887	FALSE
atewide own	Heritage Council	Good - well maintained	3394	FALSE
	Shire of Denmark	Good	3394	FALSE
	Shire of Denmark	Good	23890	FALSE
	Heritage Council		23890	FALSE
	Heritage Council		14426	FALSE
	Shire of Denmark	Poor	14426	FALSE
	Shire of Denmark		23892	FALSE
	Heritage Council		23892	FALSE
	Shire of Denmark	Good	683	FALSE
cheme	Heritage Council		683	FALSE
	Heritage Council		14314	FALSE
	Shire of Denmark		14314	FALSE
	Heritage Council		14340	FALSE
	Shire of Denmark		14340	FALSE
RHP - To	Heritage Council		14343	FALSE
	Shire of Denmark	Good	14343	FALSE
	Shire of Denmark		14304	FALSE
	Heritage Council		14304	FALSE

Appendix 2: Town Planning Scheme Heritage Listing & Municipal Inventory L

Place Name	Location	Listings
House	44 Hollings Road, Denmark	Town Planning Scheme
House	44 Hollings Road, Denmark	Municipal Inventory
House	12 Welsh Street, Denmark	Municipal Inventory
House	12 Welsh Street, Denmark	Town Planning Scheme
Urban Bushland near Recreation Centre & Oval Reserve	Bounded by Brazier/ Barnett/Holling & Haire streets,Denmark	Town Planning Scheme
Urban Bushland near Recreation Centre & Oval Reserve	Bounded by Brazier/Barnett/ Holling & Haire streets, Denmark	Municipal Inventory
Blue Lake (Kwoora Kaip)	DIA Site Number: 4553 Denmark	
Blue Lake (Kwoora Kaip)	DIA Site Number: 4553 Denmark	Municipal Inventory
Tingledale Hall (Tingledale Old School)	Valley of the Giants Rd Denmark	Municipal Inventory
Tingledale Hall (Tingledale Old School)	Valley of the Giants Rd Denmark	Town Planning Scheme
Urban Bushland South Coast Highway - Eastern approach	South Coast Hwy Denmark	Municipal Inventory
Urban Bushland South Coast Highway - Eastern approach	South Coast Hwy Denmark	Town Planning Scheme
Possum Trapper Cave	Reserve 47891 Above Mitchell River Denbarker	Municipal Inventory
Possum Trapper Cave	Reserve 47891 Above Mitchell River Denbarker	
Reeveâ€™s & Co Butcher Shop	10 Hollings Rd Denmark	Municipal Inventory
Reeveâ€™s & Co Butcher Shop	10 Hollings Rd Denmark	Heritage Council
Nash Franz Scout Hall (Agricultural & Horticultural Society Hall)	Brazier St Denmark	
Nash Franz Scout Hall (Agricultural & Horticultural Society Hall)	Brazier St Denmark	Municipal Inventory

isting by Local Government Authority: DENMARK

	Custodian	Condition	Place No.	Is Demolished
	Heritage Council		14317	FALSE
	Shire of Denmark	Good	14317	FALSE
	Shire of Denmark	Very good	14315	FALSE
	Heritage Council		14315	FALSE
	Heritage Council		14414	FALSE
	Shire of Denmark		14414	FALSE
	Heritage Council		23913	FALSE
	Shire of Denmark		23913	FALSE
	Shire of Denmark	Very good	14410	FALSE
	Heritage Council		14410	FALSE
	Shire of Denmark		14423	FALSE
	Heritage Council		14423	FALSE
	Shire of Denmark		23922	FALSE
	Heritage Council		23922	FALSE
	Shire of Denmark	Good	23923	FALSE
		23923	FALSE	
	Heritage Council		23925	FALSE
	Shire of Denmark	Fair	23925	FALSE

Appendix 2: Town Planning Scheme Heritage Listing & Municipal Inventory L

Place Name	Location	Listings
Denmark District Hospital	Peace Street, Denmark	Town Planning Scheme
Denmark District Hospital	Peace Street, Denmark	Municipal Inventory
Teacher's Quarters (fmr), Denmark (Schoolmaster's House, Lynda & Kerry Halse's House)	11 Price Street, Denmark	Municipal Inventory
Teacher's Quarters (fmr), Denmark (Schoolmaster's House, Lynda & Kerry Halse's House)	11 Price Street, Denmark	RHP - Assessed-Below Threshold, Town Plannin
Urban Bushland Waste Water Works Reserve	Bounded by Hodgson/Brazier/ Inlet Drive & Campbell, Denmark	Municipal Inventory
Urban Bushland Waste Water Works Reserve	Bounded by Hodgson/Brazier/ Inlet Drive & Campbell, Denmark	Town Planning Scheme
Hay River (Genulup Beela)	South Coast Highway, Denmark	Municipal Inventory
Hay River (Genulup Beela)	South Coast Highway, Denmark	
Goundrey's Old Butter Factory	North Street, Denmark	Town Planning Scheme
Goundrey's Old Butter Factory	North Street, Denmark	Municipal Inventory
Station Master's House (Kindergarten and Lions Building)	952 Crellin Street, Denmark	
Station Master's House (Kindergarten and Lions Building)	952 Crellin Street, Denmark	Municipal Inventory
Denmark Cooperative Co. Ltd	33 South Coast Hwy, Denmark	
Denmark Cooperative Co. Ltd	33 South Coast Hwy, Denmark	Municipal Inventory
Urban Bushland Jamieson Hill	N of Christina Crescent & Harpendene Rise, Denmark	Register of the National Estate, Town Planning S
Urban Bushland Jamieson Hill	N of Christina Crescent & Harpendene Rise, Denmark	Municipal Inventory
Former Agricultural Research Station manager's house, Denmark	Denmark	
Former Agricultural Research Station manager's house, Denmark	Denmark	RHP - Does not warrant

isting by Local Government Authority: DENMARK

	Custodian	Condition	Place No.	Is Demolished
	Heritage Council		14171	FALSE
	Shire of Denmark	Very good	14171	FALSE
	Shire of Denmark	Good	13932	FALSE
ng Scheme	Heritage Council	Good	13932	FALSE
	Shire of Denmark		14412	FALSE
	Heritage Council		14412	FALSE
	Shire of Denmark		23927	FALSE
	Heritage Council		23927	FALSE
	Heritage Council		14338	FALSE
	Shire of Denmark	Fair/good	14338	FALSE
	Heritage Council		23933	FALSE
	Shire of Denmark	Good	23933	FALSE
	Heritage Council		23934	FALSE
	Shire of Denmark	Good	23934	FALSE
cheme	Heritage Council		14418	FALSE
	Shire of Denmark		14418	FALSE
	Shire of Denmark		16304	FALSE
assessment	Heritage Council	Poor	16304	FALSE

Appendix 2: Town Planning Scheme Heritage Listing & Municipal Inventory L

Place Name	Location	Listings
Monastery Landing	Frankland River Nornalup	Heritage Council
Monastery Landing	Frankland River Nornalup	Municipal Inventory
RSL Memorial Hall (fmr) & Denmark Honour Roll (Denmark Tourist Bureau)	Strickland St Denmark	Statewide War Memorial Survey, Town Planning S
RSL Memorial Hall (fmr) & Denmark Honour Roll (Denmark Tourist Bureau)	Strickland St Denmark	Municipal Inventory
Harewood School	1350 Scotsdale Road, Denmark	Municipal Inventory
Harewood School	1350 Scotsdale Rd Denmark	Municipal Inventory
Denmark Public Cemetery	South Coast Hwy, Denmark	Municipal Inventory
Denmark Public Cemetery	South Coast Hwy, Denmark	Town Planning Scheme
Old Denmark Police Station (Historical Museum)	Mitchell Street, Denmark	Municipal Inventory, Town Planning Scheme
Hamilton House	Denmark	RHP - Does not warrant assessment
Parker's House & Kent River Trading Post (Kent River Cottage, Parker Hall)	South Coast Hwy, Kenton	Municipal Inventory
Parker's House & Kent River Trading Post (Kent River Cottage, Parker Hall)	South Coast Hwy, Kenton	Town Planning Scheme
Federal Street Precinct (Clarke's Houses)	5-13 Federal Street, Denmark	Town Planning Scheme
Federal Street Precinct (Clarke's Houses)	5-13 Federal Street, Denmark	Municipal Inventory
Denmark Frail & Aged Lodge	2 Scotsdale Road Denmark	Heritage Council
Denmark Frail & Aged Lodge	2 Scotsdale Road Denmark	Municipal Inventory
Denmark Police Station - Original (Denmark Historical Museum)	Mitchell Street, Denmark	Municipal Inventory
Denmark Police Station - Original (Denmark Historical Museum)	Mitchell Street, Denmark	Town Planning Scheme
Parryville School (fmr) (Parryville Hall)	South Coast Hwy, Denmark	Municipal Inventory
Parryville School (fmr) (Parryville Hall)	South Coast Hwy, Denmark	Town Planning Scheme
Commercial Building (2)	28 Hollings Road, Denmark	Municipal Inventory
Commercial Building (2)	28 Hollings Road, Denmark	

isting by Local Government Authority: DENMARK

	Custodian	Condition	Place No.	Is Demolished
		23935	FALSE	
	Shire of Denmark		23935	FALSE
l Scheme	Heritage Council		682	FALSE
	Shire of Denmark	Good	682	FALSE
	Shire of Denmark	Good	23936	FALSE
	Shire of Denmark	Good	23936	FALSE
	Shire of Denmark	Good	14306	FALSE
	Heritage Council		14306	FALSE
wn	Heritage Council		675	FALSE
t	Heritage Council	Demolished	3421	TRUE
	Shire of Denmark	Good	14396	FALSE
	Heritage Council		14396	FALSE
	Heritage Council		14311	FALSE
	Shire of Denmark	Mostly sound	14311	FALSE
		23945	FALSE	
	Shire of Denmark	Good	23945	FALSE
	Shire of Denmark	Good	4040	FALSE
	Heritage Council		4040	FALSE
	Shire of Denmark	Good	14399	FALSE
	Heritage Council		14399	FALSE
	Shire of Denmark	Good	23948	FALSE
	Heritage Council		23948	FALSE

Appendix 2: Town Planning Scheme Heritage Listing & Municipal Inventory L

Place Name	Location	Listings
Springdale Beach (ochre source and stone arrangement)	Denmark-Nornalup Railway-Heritage Trail, Denmark	Heritage Council
Springdale Beach (ochre source and stone arrangement)	Denmark-Nornalup Railway-Heritage Trail, Denmark	Municipal Inventory
Nornalup Hospital	6676 South Coast Hwy Nornalup	Heritage Council
Nornalup Hospital	6676 South Coast Hwy Nornalup	Municipal Inventory
WWII gun and carriage	54 Strickland Street, Denmark	Municipal Inventory
WWII gun and carriage	54 Strickland Street, Denmark	
Mitchell Street Precinct, Denmark	Mitchell Street, Denmark	RHP - assessment not w
Mitchell Street Precinct, Denmark	Mitchell Street, Denmark	Municipal Inventory
Urban bushland, Hardy Street Reserve	Bounded by South Coast Hwy, Hardy Street, Mt Shadforth, back of Lionsville	Town Planning Scheme
Urban bushland, Hardy Street Reserve	Bounded by South Coast Hwy, Hardy Street, Mt Shadforth, back of Lionsville	Municipal Inventory
Whittakers Sawmill site (McLean's Sawmill site)	Cnr South Coast Hwy & Cussons Road, Denmark	Town Planning Scheme, Inventory
Old Denmark railway line and bridge (Aggie Track)	Nornalup to Hay River. Denmark	RHP - to be assessed
Urban bushland, Industrial Estate Reserve	Between Industrial & Zimmermann roads, Denmark	Town Planning Scheme
Urban bushland, Industrial Estate Reserve	Between Industrial & Zimmermann roads, Denmark	Municipal Inventory
Railway precinct	Cnr Hollings and Inlet Drive, Denmark	Heritage Council
Railway precinct	Cnr Hollings and Inlet Drive, Denmark	Municipal Inventory
Denmark Police quarters	Harper Street, Denmark	
Group Settlement House (Parryville)	Pates Road, Denmark	Municipal Inventory
Group Settlement House (Parryville)	Pates Road, Denmark	Town Planning Scheme

isting by Local Government Authority: DENMARK

	Custodian	Condition	Place No.	Is Demolished
			23958	FALSE
	Shire of Denmark		23958	FALSE
			23961	FALSE
	Shire of Denmark	Good	23961	FALSE
	Shire of Denmark	Good	23963	FALSE
	Heritage Council		23963	FALSE
arranted	Heritage Council	Fair/good	19895	FALSE
	Shire of Denmark	Fair/good	19895	FALSE
	Heritage Council		14417	FALSE
	Shire of Denmark		14417	FALSE
Municipal	Heritage Council		14425	FALSE
	Heritage Council	Sound	1041	FALSE
	Heritage Council		14421	FALSE
	Shire of Denmark		14421	FALSE
			23971	FALSE
	Shire of Denmark		23971	FALSE
	Heritage Council	Moved from High St	674	FALSE
	Shire of Denmark	Good	14313	FALSE
	Heritage Council		14313	FALSE

Appendix 2: Town Planning Scheme Heritage Listing & Municipal Inventory Listing

Place Name	Location	Listings
Torbay-Denmark Railway - Denmark-Nornalup Rlwy (Disused Railway Reserves and Bridges)	Denmark	Municipal Inventory, Town Planning Scheme
Torbay-Denmark Railway - Denmark-Nornalup Rlwy (Disused Railway Reserves and Bridges)	Denmark	Municipal Inventory
Ricketts Store (Nockold Bros)	South Coast Hwy Denmark	Town Planning Scheme
Ricketts Store (Nockold Bros)	South Coast Hwy Denmark	Municipal Inventory
Piese House	Lot 908 South Coast Hwy, Denmark	Town Planning Scheme, Municipal Inventory
Piese House	Lot 908 South Coast Hwy, Denmark	Municipal Inventory
Old Post Office (Nornalup Post Office (2))	6674 South Coast Hwy, Nornalup	Municipal Inventory
Old Post Office (Nornalup Post Office (2))	6674 South Coast Hwy, Nornalup	
Denmark Church	Cnr South Coast Hwy & Moore Street, Denmark	Uniting Church Inventory
Denmark Agricultural College	South Coast Hwy, Denmark	Town Planning Scheme assessed below threshold by the National Trust
Denmark Agricultural College	South Coast Hwy, Denmark	Municipal Inventory
Roadside verges	South Coast Hwy, McLeod Road to Denmark	Town Planning Scheme, Municipal Inventory
Urban bushland, Pioneer Park	South Coast Hwy/Ocean Beach Road & Buckley Road, Denmark	Municipal Inventory
Urban bushland, Pioneer Park	South Coast Hwy/Ocean Beach Road & Buckley Road, Denmark	Town Planning Scheme
Denmark Masonic Hall	Cnr Offer Street & Ocean Beach Road, Denmark	
Denmark Masonic Hall	Cnr Offer Street & Ocean Beach Road, Denmark	Municipal Inventory
Murphy's Workshop	1 Short Street, Denmark	
Murphy's Workshop	1 Short Street, Denmark	Municipal Inventory

g by Local Government Authority: DENMARK

	Custodian	Condition	Place No.	Is Demolished
vn	Heritage Council		14310	FALSE
	Shire of Denmark		14310	FALSE
	Heritage Council		14404	FALSE
	Shire of Denmark	Very good	14404	FALSE
ntory	Heritage Council		14320	FALSE
	Shire of Denmark	Fair	14320	FALSE
	Shire of Denmark	Good	23951	FALSE
	Heritage Council		23951	FALSE
ory	Heritage Council		15055	FALSE
,RHP - l, classified	Heritage Council		4307	FALSE
	Shire of Denmark	Very good	4307	FALSE
ntory	Heritage Council		14405	FALSE
	Shire of Denmark		14419	FALSE
	Heritage Council		14419	FALSE
	Heritage Council		677	FALSE
	Shire of Denmark	Good	677	FALSE
	Heritage Council		23955	FALSE
	Shire of Denmark	Good	23955	FALSE

Appendix 2: Town Planning Scheme Heritage Listing & Municipal Inventory L

Place Name	Location	Listings
Mrs Smith's Haberdashery Store	6683 South Coast Hwy, Nornalup	Municipal Inventory
Mrs Smith's Haberdashery Store	6683 South Coast Hwy, Nornalup	
Mt Lindesay School	798 Scotsdale Road, Denmark	
Mt Lindesay School	798 Scotsdale Road, Denmark	Municipal Inventory
Parker Hall (Kent River Trading Post)	Lot 2320 South Coast Hwy, Kenton	Municipal Inventory
Parker Hall (Kent River Trading Post)	Lot 2320 South Coast Hwy, Kenton	
John Clark Memorial Bandstand	Denmark River Foreshore, Denmark	Municipal Inventory
John Clark Memorial Bandstand	Denmark River Foreshore, Denmark	Town Planning Scheme
Randall Park Gun Memorial	South Coast Hwy, Denmark	Municipal Inventory, Town Planning Scheme
Manse	9 Brazier Street, Denmark	Uniting Church Inventor
Reso Seats	South Coast Highway Denmark	Municipal Inventory
Reso Seats	South Coast Highway Denmark	Heritage Council

isting by Local Government Authority: DENMARK

	Custodian	Condition	Place No.	Is Demolished
	Shire of Denmark	Poor	23972	FALSE
	Heritage Council		23972	FALSE
	Heritage Council		23976	FALSE
	Shire of Denmark	Fair	23976	FALSE
	Shire of Denmark	Good	23979	FALSE
	Heritage Council		23979	FALSE
	Shire of Denmark	Good	14322	FALSE
	Heritage Council		14322	FALSE
wn	Heritage Council		14402	FALSE
y	Heritage Council		15063	FALSE
	Shire of Denmark	Fair	23981	FALSE
		23981	FALSE	

Appendix 3: Aboriginal Cultural Heritage Registered site by Local Government

ID	Name	Legacy ID	Status	Type	R
4436	PODDY POINT BURIAL	So2820	Registered Site	Skeletal Material / Burial	So
4485	PARRY INLET FISH TRAP	So2717	Registered Site	Artefacts / Scatter, Fish Trap	So
4554	CRUSOE BEACH ARRANGEMENT	So2531	Registered Site	Fish Trap, Man-Made Structure	So
4555	MITCHELL RIVER.	So2532	Registered Site	Artefacts / Scatter, Quarry	So
4593	THE GAP I	So2511	Registered Site	Artefacts / Scatter	So
4600	MARBALUP FISH TRAPS	So2451	Registered Site	Artefacts / Scatter, Fish Trap, Man-Made Structure	So
4668	KATELYSIA ROCK SHELTER.	So2276	Registered Site	Artefacts / Scatter, Midden / Scatter, Rockshelter	So
4700	POINT IRWIN QUARRY	So2123	Registered Site	Artefacts / Scatter, Quarry	So
4786	PEACEFUL BAY	So1907	Registered Site	Man-Made Structure	So
4910	LIGHTS BEACH	So1738	Registered Site	Artefacts / Scatter	So
4943	CONSPICUOUS BEACH I	So1717	Registered Site	Artefacts / Scatter, Midden / Scatter	So
4944	FOUL BAY EAST	So1718	Registered Site	Artefacts / Scatter	So
4945	BOAT HARBOUR	So1719	Registered Site	Artefacts / Scatter	So
5181	NORNALUP NATIONAL PARK	So1353	Registered Site	Artefacts / Scatter	So
5335	CONSPICUOUS CLIFF	So0938	Registered Site	Grinding Patches / Grooves	So
5707	WILSON'S INLET, DENMARK.	So0413	Registered Site	Man-Made Structure	So

Authority: DENMARK

Region	Restrictions	File Restricted	Location Restricted	Boundary Reliable	Protected Area	Boundary Last Updated
Southern	No Gender Restrictions	Yes	Yes	No	No	3/11/99
Southern	No Gender Restrictions	No	No	Yes	No	12/05/00
Southern	No Gender Restrictions	No	No	No	No	1/06/99
Southern	No Gender Restrictions	No	No	No	No	4/06/99
Southern	No Gender Restrictions	No	No	No	No	3/12/98
Southern	No Gender Restrictions	No	No	Yes	No	11/07/03
Southern	No Gender Restrictions	No	No	No	No	12/05/00
Southern	No Gender Restrictions	No	No	No	No	3/12/98
Southern	No Gender Restrictions	No	No	No	No	3/12/98
Southern	No Gender Restrictions	No	No	Yes	No	12/05/00
Southern	No Gender Restrictions	No	No	No	No	20/07/00
Southern	No Gender Restrictions	No	No	Yes	No	12/05/00
Southern	No Gender Restrictions	No	No	Yes	No	12/05/00
Southern	No Gender Restrictions	No	No	No	No	3/12/98
Southern	No Gender Restrictions	No	No	No	No	3/12/98
Southern	No Gender Restrictions	No	No	No	No	3/12/98

Appendix 3: Aboriginal Cultural Heritage Registered site by Local Government

ID	Name	Legacy ID	Status	Type	R
22081	Denmark River		Registered Site	Mythological	So
27936	Kwoorabup Corroborree Ground		Registered Site	Ceremonial, Historical	So
636	OYSTER HARBOUR (total)	So2888	Registered Site	Mythological	So
637	GREEN ISLAND	So2889	Registered Site	Historical, Mythological	So
4419	LAKE PLEASANT VIEW EAST	So2792	Registered Site	Artefacts / Scatter	So
4436	PODDY POINT BURIAL	So2820	Registered Site	Skeletal Material / Burial	So
4456	LAKE VANCOUVER	So2764	Registered Site	Artefacts / Scatter	So
4600	MARBALUP FISH TRAPS	So2451	Registered Site	Artefacts / Scatter, Fish Trap, Man-Made Structure	So
4784	ALBANY ENGRAVINGS	So1905	Registered Site	Engraving	So
4837	LIMEKILNS POINT	So1904	Registered Site	Fish Trap, Man-Made Structure	So
4911	HERALD POINT.	So1739	Registered Site	Artefacts / Scatter	So
4959	CHILLILUP	So1673	Registered Site	Artefacts / Scatter	So
5116	LAKE PLEASANT VIEW	So1507	Registered Site	Artefacts / Scatter	So
5117	GULL ROCK LAKE ROAD	So1508	Registered Site	Artefacts / Scatter	So
5118	LEDGE BEACH ROAD	So1509	Registered Site	Artefacts / Scatter	So
5188	Weelara Lake (DEADMANS LAKE)	So1379	Registered Site		So

Authority: ALBANY

Region	Restrictions	File Restricted	Location Restricted	Boundary Reliable	Protected Area	Boundary Last Updated
Southern	No Gender Restrictions	No	No	Yes	No	4/06/10 8:35
Southern	No Gender Restrictions	No	No	Yes	No	1/04/10 8:37
Southern	No Gender Restrictions	No	No	Yes	No	14/11/11 10:10
Southern	No Gender Restrictions	No	No	Yes	No	14/11/11 10:21
Southern	No Gender Restrictions	No	No	Yes	No	11/12/00
Southern	No Gender Restrictions	Yes	Yes	No	No	3/11/99
Southern	No Gender Restrictions	No	No	Yes	No	5/05/00
Southern	No Gender Restrictions	No	No	Yes	No	11/07/03
Southern	No Gender Restrictions	No	No	Yes	No	12/05/00
Southern	No Gender Restrictions	No	No	Yes	No	12/05/00
Southern	No Gender Restrictions	No	No	No	No	12/05/00
Southern	No Gender Restrictions	No	No	Yes	No	20/01/00
Southern	No Gender Restrictions	No	No	Yes	No	18/06/08 15:02
Southern	No Gender Restrictions	No	No	Yes	No	15/05/00
Southern	No Gender Restrictions	No	No	No	No	12/05/00
Southern	No Gender Restrictions	No	No	Yes	No	14/11/11 10:41

Appendix 3: Aboriginal Cultural Heritage Registered site by Local Government

ID	Name	Legacy ID	Status	Type	R
5523	KALGAN HALL	Soo616	Registered Site	Artefacts / Scatter	So
5708	MUTTON BIRD ISLAND.	Soo414	Registered Site		So
5743	KING POINT, ALBANY.	Soo397	Registered Site		So
5744	OYSTER HARBOUR, ALBANY.	Soo398	Registered Site	Artefacts / Scatter, Fish Trap	So
5746	KALGAN RIVER	Soo400	Registered Site	Fish Trap, Mythological	So
5748	SWEEP ROCK	Soo402	Registered Site	Grinding Patches / Grooves	So
5750	TWO PEOPLES BAY NORTH	Soo404	Registered Site	Grinding Patches / Grooves	So
17229	LAKE PLEASANT VIEW RESERVE		Registered Site	Historical	So
17473	WAITCHINICUP / WAYCHINICUP		Registered Site	Mythological, Skeletal Material / Burial	So
17475	TOOLERBERUP		Registered Site	Historical, Mythological	So
17698	LAKE PLEASANT VIEW TURTLE SITE		Registered Site	Rockshelter	So
18705	Black Stump		Registered Site	Skeletal Material / Burial	So
21761	Mokare's Grave		Registered Site	Skeletal Material / Burial	So
21833	EAST BANK OF CREEK 1		Registered Site	Mythological	So
21835	EAST BANK OF CREEK 2		Registered Site	Mythological	So
21837	CREEK 3		Registered Site	Mythological	So
22189	Southdown 1		Registered Site	Artefacts / Scatter	So
22190	Southdown 2		Registered Site	Artefacts / Scatter	So

Authority: ALBANY

Region	Restrictions	File Restricted	Location Restricted	Boundary Reliable	Protected Area	Boundary Last Updated
Southern	No Gender Restrictions	No	No	Yes	No	2/11/06 16:05
Southern	No Gender Restrictions	No	No	No	No	3/12/98
Southern	No Gender Restrictions	No	No	Yes	No	14/01/13 10:10
Southern	No Gender Restrictions	No	No	No	Yes	14/01/00
Southern	No Gender Restrictions	No	No	No	No	5/06/07 15:51
Southern	No Gender Restrictions	No	No	No	No	3/12/98
Southern	No Gender Restrictions	No	No	No	No	3/12/98
Southern	No Gender Restrictions	No	No	Yes	No	8/06/00
Southern	No Gender Restrictions	Yes	Yes	Yes	No	15/09/00
Southern	No Gender Restrictions	Yes	Yes	Yes	No	29/07/00
Southern	No Gender Restrictions	No	No	Yes	No	30/09/00
Southern	No Gender Restrictions	No	No	Yes	No	6/03/07 11:36
Southern	No Gender Restrictions	No	No	Yes	No	25/02/05
Southern	No Gender Restrictions	No	No	Yes	No	4/01/08 10:43
Southern	No Gender Restrictions	No	No	Yes	No	4/01/08 11:03
Southern	No Gender Restrictions	No	No	Yes	No	25/02/10 13:04
Southern	No Gender Restrictions	No	No	Yes	No	17/11/11 11:51
Southern	No Gender Restrictions	No	No	Yes	No	17/11/11 11:57

Appendix 3: Aboriginal Cultural Heritage Registered site by Local Government

ID	Name	Legacy ID	Status	Type	R
22191	Southdown 3		Registered Site	Artefacts / Scatter	So
22192	Southdown 4		Registered Site	Artefacts / Scatter	So
22193	Southdown 5		Registered Site	Artefacts / Scatter	So
22195	Southdown 6		Registered Site	Artefacts / Scatter	So
22196	Southdown 7		Registered Site	Artefacts / Scatter	So
22526	Paddy Coyne's Camp		Registered Site	Historical	So
22527	Albany Noongar Centre Ochre Site		Registered Site	Ceremonial, Historical	So
22556	Barmup (Strawberry Hill Farm)		Registered Site	Artefacts / Scatter, Historical	So

Authority: ALBANY

Region	Restrictions	File Restricted	Location Restricted	Boundary Reliable	Protected Area	Boundary Last Updated
Southern	No Gender Restrictions	No	No	Yes	No	17/11/11 12:01
Southern	No Gender Restrictions	No	No	Yes	No	17/11/11 13:21
Southern	No Gender Restrictions	No	No	Yes	No	24/08/05
Southern	No Gender Restrictions	No	No	Yes	No	17/11/11 13:27
Southern	No Gender Restrictions	No	No	Yes	No	17/11/11 13:30
Southern	No Gender Restrictions	No	No	Yes	No	8/04/10 8:27
Southern	No Gender Restrictions	No	No	Yes	No	20/07/07 10:33
Southern	No Gender Restrictions	No	No	Yes	No	2/02/07 13:54

Appendix 3: Aboriginal Cultural Heritage Registered site by Local Government

ID	Name	Legacy ID	Status	Type	R
4455	MORANDE LAKE	So2763	Registered Site	Artefacts / Scatter, Quarry	So
4582	WAMBELLUP SCARRED TREE	So2495	Registered Site	Modified Tree	So
4589	TAKALERUP RD	So2506	Registered Site	Artefacts / Scatter	So
4607	SPRING HILL.	So2459	Registered Site	Artefacts / Scatter	So
4662	CHILLINUP ROAD WEST	So2268	Registered Site	Artefacts / Scatter	So
4836	PAUL CREEK SCARRED TREE	So1903	Registered Site	Modified Tree	So
4965	TEST PIT	So1679	Registered Site	Artefacts / Scatter	So
4968	WONGALILLUP	So1682	Registered Site	Artefacts / Scatter, Ceremonial, Man-Made Structure	So
5112	KAMBALLUP POOL	So1503	Registered Site	Artefacts / Scatter	So
5160	WOOGENILLUP POOL	So1497	Registered Site	Artefacts / Scatter	So
5186	MOORILLUP POOL	So1373	Registered Site	Artefacts / Scatter	So
5189	LALLEYS FARM POSSUM TREES	So1380	Registered Site	Modified Tree	So
5521	TAKYLARUP	So0614	Registered Site	Artefacts / Scatter	So
15087	MT. BARKER 01	So2999	Registered Site	Artefacts / Scatter	No Re
15093	MT. BARKER 07	So3005	Registered Site	Artefacts / Scatter	No Re
22081	Denmark River		Registered Site	Mythological	So
28190	Hay River Terrace Site		Registered Site	Artefacts / Scatter	So

Authority: PLANTAGENET

Region	Restrictions	File Restricted	Location Restricted	Boundary Reliable	Protected Area	Boundary Last Updated
uthern	No Gender Restrictions	No	No	Yes	No	6/07/99
uthern	No Gender Restrictions	No	No	No	No	3/12/98
uthern	No Gender Restrictions	No	No	No	No	3/12/98
uthern	No Gender Restrictions	No	No	Yes	No	26/10/01
uthern	No Gender Restrictions	No	No	No	No	3/12/98
uthern	No Gender Restrictions	No	No	Yes	No	13/01/00
uthern	No Gender Restrictions	No	No	Yes	No	30/03/00
uthern	No Gender Restrictions	No	No	No	No	3/12/98
uthern	No Gender Restrictions	No	No	No	No	14/01/00
uthern	No Gender Restrictions	No	No	No	No	3/12/98
uthern	No Gender Restrictions	No	No	No	No	18/01/00
uthern	No Gender Restrictions	No	No	No	No	3/12/98
uthern	No Gender Restrictions	No	No	No	No	20/01/00
ot corded	No Gender Restrictions	No	No	Yes	No	18/01/00
ot corded	No Gender Restrictions	No	No	Yes	No	18/01/00
uthern	No Gender Restrictions	No	No	Yes	No	4/06/10 8:35
uthern	No Gender Restrictions	No	No	Yes	No	30/09/10 16:07

Appendix 3: Aboriginal Cultural Heritage Registered site by Local Government

ID	Name	Legacy ID	Status	Type	R
962	TUNNEY FISH TRAPS	So2872	Registered Site	Fish Trap	So
4835	TARIPTA.	So1902	Registered Site		So
4920	BOYACUP HOMESTEAD BURIAL	So1688	Registered Site	Skeletal Material / Burial	So
4921	DUJEMERRUP POOL 1	So1689	Registered Site	Skeletal Material / Burial	So
4922	DUJEMERRUP POOL 2	So1690	Registered Site	Skeletal Material / Burial	So
4925	TUNNEY WILGIE.	So1693	Registered Site	Artefacts / Scatter, Ceremonial, Quarry, Skeletal Material / Burial	So
4969	YERIMINUP BURIAL 1	So1683	Registered Site	Ceremonial, Skeletal Material / Burial	So
4970	YERIMINUP BURIAL 2	So1684	Registered Site	Skeletal Material / Burial	So
5339	TWONGKUP.	So0943	Registered Site	Artefacts / Scatter, Modified Tree, Skeletal Material / Burial	So
5698	TENTERDIN WEST	So0464	Registered Site	Modified Tree	So
5732	SALT LAKE.	So0443	Registered Site	Artefacts / Scatter	So
5737	ROCKY GULLY.	So0391	Registered Site		So
5739	TENTERDEN	So0393	Registered Site	Modified Tree	So
5745	CAMEL LAKE	So0399	Registered Site	Man-Made Structure	So
17465	YERIMINUP FUNERAL TREE		Registered Site	Ceremonial	So

Authority: CRANBROOK

Region	Restrictions	File Restricted	Location Restricted	Boundary Reliable	Protected Area	Boundary Last Updated
outhern	No Gender Restrictions	No	No	No	No	3/12/98
outhern	No Gender Restrictions	No	No	No	No	3/12/98
outhern	No Gender Restrictions	No	No	No	No	3/12/98
outhern	No Gender Restrictions	No	No	No	No	3/12/98
outhern	No Gender Restrictions	No	No	No	No	3/12/98
outhern	No Gender Restrictions	No	No	Yes	No	22/08/03
outhern	No Gender Restrictions	No	No	Yes	No	12/03/12 15:40
outhern	No Gender Restrictions	No	No	No	No	3/12/98
outhern	No Gender Restrictions	No	No	Yes	No	29/07/99
outhern	No Gender Restrictions	No	No	No	No	3/12/98
outhern	No Gender Restrictions	No	No	No	No	3/12/98
outhern	No Gender Restrictions	No	No	No	No	3/12/98
outhern	No Gender Restrictions	No	No	No	No	3/12/98
outhern	No Gender Restrictions	No	No	No	No	3/12/98
outhern	No Gender Restrictions	No	No	No	No	3/12/98
outhern	No Gender Restrictions	Yes	Yes	Yes	No	27/03/12 15:45

Appendix 3: Aboriginal Cultural Heritage Registered site by Local Government

ID	Name	Legacy ID	Status	Type	R
646	COCANARUP MASSACRE SITE.	So2896	Registered Site	Man-Made Structure, Skeletal Material / Burial	Go
1455	OLDFIELD RIVER	Wo1738	Registered Site	Artefacts / Scatter	Go
1646	CLAYTUP SURFACE SCATTER AND GNAMMA HOLE	Wo1550	Registered Site	Artefacts / Scatter, Historical, Man-Made Structure, Modified Tree	Go
1647	COUJINUP SURFACE SCATTER	Wo1551	Registered Site	Artefacts / Scatter	Go
1980	Jerdacuttup River Artefact Scatter	Wo1175	Registered Site	Artefacts / Scatter	Go
4547	COCANARUP STONE ARRANGEMENT	So2522	Registered Site	Man-Made Structure	Go
4934	WEST BEACH	So1708	Registered Site	Artefacts / Scatter	Go
5757	FITZGERALD RIVER NAT. PARK	So0411	Registered Site	Man-Made Structure	Go
18950	Gnamma Hole		Registered Site	Artefacts / Scatter, Ceremonial, Historical, Man-Made Structure	Go
21378	Jerdacuttup River		Registered Site	Mythological	So
26262	Bandalup Soak (artefact scatter)		Registered Site	Artefacts / Scatter	Go
26264	Young River		Registered Site	Mythological	Go
26265	Oldfield River		Registered Site	Mythological	Go
26270	Mt Cattlin 2		Registered Site	Artefacts / Scatter	Go
30009	Hamersley Site Complex		Registered Site	Historical, Mythological	So
30412	Jerdacuttup River Crossing		Registered Site	Artefacts / Scatter	Go
30413	Jerdacuttup Ridge Site		Registered Site	Artefacts / Scatter	Go

Authority: RAVENSTHORPE

Region	Restrictions	File Restricted	Location Restricted	Boundary Reliable	Protected Area	Boundary Last Updated
Oldfields	No Gender Restrictions	No	No	No	No	28/03/11 15:05
Oldfields	No Gender Restrictions	No	No	Yes	No	27/07/00
Oldfields	No Gender Restrictions	No	No	No	No	25/11/08 15:12
Oldfields	No Gender Restrictions	No	No	No	No	3/12/98
Oldfields	No Gender Restrictions	No	No	Yes	No	27/09/11 9:50
Oldfields	No Gender Restrictions	No	No	No	No	18/02/00
Oldfields	No Gender Restrictions	No	No	Yes	No	1/03/12 10:26
Oldfields	No Gender Restrictions	No	No	No	No	3/12/98
Oldfields	No Gender Restrictions	Yes	Yes	Yes	No	15/03/12 8:42
Southern	No Gender Restrictions	No	No	Yes	No	10/05/13 14:32
Oldfields	No Gender Restrictions	No	No	Yes	No	3/02/09 14:54
Oldfields	No Gender Restrictions	No	No	Yes	No	22/01/09 9:26
Oldfields	No Gender Restrictions	No	No	Yes	No	2/02/09 14:48
Oldfields	No Gender Restrictions	No	No	Yes	No	28/10/10 15:01
Southern	No Gender Restrictions	No	No	Yes	No	20/07/12 15:40
Oldfields	No Gender Restrictions	No	No	Yes	No	22/09/11 13:14
Oldfields	No Gender Restrictions	No	No	Yes	No	22/09/11 13:23

Appendix 3: Aboriginal Cultural Heritage Registered site by Local Government

ID	Name	Legacy ID	Status	Type	R
596	TOOMPUP BURIAL 1	So2901	Registered Site	Skeletal Material / Burial	So
597	TOOMPUP BURIAL 2	So2902	Registered Site	Skeletal Material / Burial	So
605	AMELUP NORTH 1	So2910	Registered Site	Artefacts / Scatter	So
606	AMELUP NORTH 2	So2911	Registered Site	Artefacts / Scatter	So
607	AMELUP NORTH 3	So2912	Registered Site	Artefacts / Scatter	So
608	AMELUP SOUTH 1.	So2913	Registered Site	Artefacts / Scatter	So
4429	GNOWANGERUP RESERVE 18078.	So2804	Registered Site	Historical	So
4440	NIGHTWELL.	So2738	Registered Site		So
4446	GNOWANGERUP.	So2745	Registered Site	Ceremonial	So
4473	GNOWANGERUP NYUNGAR GRAVES	So2704	Registered Site	Skeletal Material / Burial	So
4476	BORDEN BURIALS	So2707	Registered Site	Skeletal Material / Burial	So
4961	LANCEL'S QUARRY	So1675	Registered Site	Quarry	So
5336	NIGHT ROCK WELL	So0939	Registered Site	Skeletal Material / Burial	So
16880	Gnowangerup Spring		Registered Site	Ceremonial	N R

Authority: GNOWANGERUP

Region	Restrictions	File Restricted	Location Restricted	Boundary Reliable	Protected Area	Boundary Last Updated
Southern	No Gender Restrictions	No	No	No	No	24/08/07 12:25
Southern	No Gender Restrictions	No	No	No	No	18/10/00
Southern	No Gender Restrictions	No	No	Yes	No	16/03/01
Southern	No Gender Restrictions	No	No	Yes	No	16/03/01
Southern	No Gender Restrictions	No	No	Yes	No	16/03/01
Southern	No Gender Restrictions	No	No	Yes	No	16/03/01
Southern	No Gender Restrictions	No	No	Yes	No	26/08/09 15:14
Southern	No Gender Restrictions	No	No	Yes	No	13/01/00
Southern	No Gender Restrictions	No	No	Yes	No	10/07/03
Southern	No Gender Restrictions	No	No	Yes	No	4/06/09 9:59
Southern	No Gender Restrictions	No	No	Yes	No	10/07/03
Southern	No Gender Restrictions	No	No	No	No	3/12/98
Southern	No Gender Restrictions	No	No	No	No	12/07/03
Not recorded	No Gender Restrictions	No	No	Yes	No	18/06/08 16:14

Appendix 3: Aboriginal Cultural Heritage Registered site by Local Government

ID	Name	Legacy ID	Status	Type	R
643	WANGUP ROAD BURIALS	So2893	Registered Site	Skeletal Material / Burial	So
647	STOCK ROAD BURIALS	So2897	Registered Site	Skeletal Material / Burial	So
649	CALYERUP.	So2899	Registered Site	Man-Made Structure	So
1009	FISHERY BEACH 3	So2859	Registered Site	Artefacts / Scatter	So
4418	GRAYS'/THE SALEYARDS.	So2791	Registered Site	Man-Made Structure, Modified Tree, Skeletal Material / Burial	So
4442	CARLWILGIEUP ROCKHOLE.	So2740	Registered Site	Ceremonial	So
4463	HOUSE BEACH	So2777	Registered Site	Mythological	So
4472	JANACOO LACK	So2697	Registered Site	Mythological	So
4474	YONGER-PERTIN-GIRUP.	So2705	Registered Site	Ceremonial, Mythological	So
4546	REYNOLDS HILL PEAK	So2521	Registered Site	Artefacts / Scatter, Man-Made Structure	So
4611	CARDIMINUP 4.	So2463	Registered Site	Artefacts / Scatter, Midden / Scatter	So
4629	BREMER BAY BURIAL	So2364	Registered Site	Skeletal Material / Burial	So
4931	CHITTOWURUP CREEK 2	So1699	Registered Site	Artefacts / Scatter	So
4947	BREMER BAY 2	So1651	Registered Site	Quarry	So
4956	HUNTER RIVER 3	So1670	Registered Site	Artefacts / Scatter	So
4957	KEEN'S	So1671	Registered Site	Artefacts / Scatter	So

Authority: JERRAMUNGUP

Region	Restrictions	File Restricted	Location Restricted	Boundary Reliable	Protected Area	Boundary Last Updated
Southern	No Gender Restrictions	No	No	No	No	3/12/98
Southern	No Gender Restrictions	No	No	Yes	No	10/07/03
Southern	No Gender Restrictions	No	No	No	No	3/12/98
Southern	No Gender Restrictions	No	No	Yes	No	18/01/00
Southern	No Gender Restrictions	No	No	Yes	No	18/02/00
Southern	No Gender Restrictions	No	No	Yes	No	10/07/03
Southern	No Gender Restrictions	No	No	Yes	No	10/07/03
Southern	No Gender Restrictions	No	No	Yes	No	10/07/03
Southern	No Gender Restrictions	No	No	No	No	10/07/03
Southern	No Gender Restrictions	No	No	Yes	No	18/01/00
Southern	No Gender Restrictions	No	No	No	No	3/12/98
Southern	No Gender Restrictions	No	No	Yes	No	7/10/05
Southern	No Gender Restrictions	No	No	No	No	18/01/00
Southern	No Gender Restrictions	No	No	Yes	No	18/01/00
Southern	No Gender Restrictions	No	No	No	No	20/01/00
Southern	No Gender Restrictions	No	No	No	No	20/01/00

Appendix 3: Aboriginal Cultural Heritage Registered site by Local Government

ID	Name	Legacy ID	Status	Type	R
4980	WELLSTEAD ESTUARY	So1630	Registered Site	Artefacts / Scatter	So
4985	CARVER'S RUN	So1635	Registered Site	Artefacts / Scatter	So
4987	GORDON INLET 1	So1637	Registered Site	Artefacts / Scatter	So
4994	PEPPERMINT BEACH 1	So1644	Registered Site	Artefacts / Scatter	So
4998	STOTLY SOAK	So1648	Registered Site	Artefacts / Scatter	So
4999	DOUBTFUL ISLAND BAY	So1649	Registered Site	Artefacts / Scatter	So
5009	YARRENGETUP	So1604	Registered Site	Quarry	So
5010	DEVIL CREEK 1	So1605	Registered Site	Artefacts / Scatter	So
5017	MINARUP 1	So1612	Registered Site	Artefacts / Scatter	So
5019	TWERTUP	So1614	Registered Site	Man-Made Structure	So
5021	MARANDIUP 1	So1616	Registered Site	Artefacts / Scatter	So
5026	STREAM BEACH	So1621	Registered Site	Artefacts / Scatter	So
5030	NEEDILUP RIVER 07	So1569	Registered Site	Artefacts / Scatter	So
5077	NYERILUP CREEK	So1561	Registered Site	Artefacts / Scatter	So
5082	NEEDILUP RIVER 04	So1566	Registered Site	Artefacts / Scatter	So
5083	NEEDILUP RIVER 05	So1567	Registered Site	Artefacts / Scatter	So
5152	HUNTER RIVER 2	So1489	Registered Site	Artefacts / Scatter	So

Authority: JERRAMUNGUP

Region	Restrictions	File Restricted	Location Restricted	Boundary Reliable	Protected Area	Boundary Last Updated
Southern	No Gender Restrictions	No	No	Yes	No	20/01/00
Southern	No Gender Restrictions	No	No	Yes	No	21/01/00
Southern	No Gender Restrictions	No	No	Yes	No	21/01/00
Southern	No Gender Restrictions	No	No	Yes	No	21/01/00
Southern	No Gender Restrictions	No	No	Yes	No	18/02/00
Southern	No Gender Restrictions	No	No	Yes	No	18/02/00
Southern	No Gender Restrictions	No	No	No	No	3/12/98
Southern	No Gender Restrictions	No	No	No	No	18/02/00
Southern	No Gender Restrictions	No	No	No	No	3/12/98
Southern	No Gender Restrictions	No	No	No	No	3/12/98
Southern	No Gender Restrictions	No	No	No	No	3/12/98
Southern	No Gender Restrictions	No	No	No	No	21/02/00
Southern	No Gender Restrictions	No	No	Yes	No	7/02/00
Southern	No Gender Restrictions	No	No	Yes	No	15/02/00
Southern	No Gender Restrictions	No	No	Yes	No	15/02/00
Southern	No Gender Restrictions	No	No	Yes	No	15/02/00
Southern	No Gender Restrictions	No	No	No	No	17/02/00

Appendix 3: Aboriginal Cultural Heritage Registered site by Local Government

ID	Name	Legacy ID	Status	Type	R
5156	CARDIMINUP 1	So1493	Registered Site	Artefacts / Scatter	So
5157	PARSONS STONE ARRANGEMENT	So1494	Registered Site	Man-Made Structure	So
5192	WEST RIVER STONE ARR.	So1384	Registered Site	Man-Made Structure	So
5340	HUNTER RIVER EAST	So0944	Registered Site	Artefacts / Scatter	So
5342	GNIANUP JUNCTION	So0946	Registered Site	Man-Made Structure, Skeletal Material / Burial	So
5345	BAKELUP POOLS	So0949	Registered Site	Artefacts / Scatter	So
5448	QUAALUP HOMESTEAD	So0830	Registered Site	Skeletal Material / Burial	So
5752	REYNOLDS HILL.	So0406	Registered Site	Man-Made Structure, Skeletal Material / Burial	So
5753	JERRAMUNGUP	So0407	Registered Site	Man-Made Structure	So
22705	Bremer Bay Lizard Traps		Registered Site	Man-Made Structure	So
22706	Bremer Bay Artefact Scatter 1		Registered Site	Artefacts / Scatter	So
22708	Bremer Bay Artefact Scatter 2		Registered Site	Artefacts / Scatter, Man-Made Structure	So
22709	Bremer Bay Artefact Scatter 3		Registered Site	Artefacts / Scatter	So

Authority: JERRAMUNGUP

Region	Restrictions	File Restricted	Location Restricted	Boundary Reliable	Protected Area	Boundary Last Updated
Southern	No Gender Restrictions	No	No	No	No	17/02/00
Southern	No Gender Restrictions	No	No	No	No	3/12/98
Southern	No Gender Restrictions	No	No	No	No	3/12/98
Southern	No Gender Restrictions	No	No	No	No	17/02/00
Southern	No Gender Restrictions	Yes	Yes	No	No	13/08/99
Southern	No Gender Restrictions	No	No	No	No	22/02/00
Southern	No Gender Restrictions	No	No	No	No	3/12/98
Southern	No Gender Restrictions	No	No	Yes	No	8/01/00
Southern	No Gender Restrictions	No	No	No	No	2/05/00
Southern	No Gender Restrictions	No	No	Yes	No	22/02/07 12:05
Southern	No Gender Restrictions	No	No	Yes	No	22/02/07 12:29
Southern	No Gender Restrictions	No	No	Yes	No	22/02/07 13:25
Southern	No Gender Restrictions	No	No	Yes	No	22/02/07 12:51

Appendix 3: Aboriginal Cultural Heritage Registered site by Local Government

ID	Name	Legacy ID	Status	Type	R
481	MOIR ROCK CLAYPAN	W02503	Registered Site	Artefacts / Scatter	Go
490	MIDDLE ISLAND 9	W02248	Registered Site	Artefacts / Scatter	Go
491	MT BURAMINYA.	W02249	Registered Site	Man-Made Structure	Go
1224	MT ANDREW	W01935	Registered Site	Artefacts / Scatter, Painting	Go
1296	STOKES INLET	W01897	Registered Site	Artefacts / Scatter	Go
1309	WOODUP SWAMP BURIAL	W01856	Registered Site	Skeletal Material / Burial	Go
1312	WOODUP SWAMP 21	W01859	Registered Site	Artefacts / Scatter	Go
1313	WOODUP SWAMP 22	W01860	Registered Site	Artefacts / Scatter	Go
1315	WOODUP SWAMP 24	W01862	Registered Site	Artefacts / Scatter	Go
1316	WOODUP SWAMP 25	W01863	Registered Site	Artefacts / Scatter	Go
1317	WOODUP SWAMP 26	W01864	Registered Site	Artefacts / Scatter	Go
1320	WOODUP SWAMP STONES	W01867	Registered Site	Artefacts / Scatter, Man- Made Structure	Go
1322	WOODUP SWAMP 31	W01869	Registered Site	Artefacts / Scatter	Go
1328	WOODUP SWAMP STONE ARRANGE.	W01875	Registered Site	Artefacts / Scatter, Man- Made Structure	Go
1356	WOODUP SWAMP 12	W01850	Registered Site	Artefacts / Scatter	Go
1407	HELMS ARBORETUM	W01796	Registered Site	Artefacts / Scatter, Modified Tree	Go
1413	YOUNG RIVER BRIDGE WEST	W01749	Registered Site	Artefacts / Scatter	Go

Authority: ESPERANCE

Region	Restrictions	File Restricted	Location Restricted	Boundary Reliable	Protected Area	Boundary Last Updated
Oldfields	No Gender Restrictions	No	No	No	No	6/06/00
Oldfields	No Gender Restrictions	No	No	Yes	No	9/11/00
Oldfields	No Gender Restrictions	No	No	Yes	No	2/08/00
Oldfields	No Gender Restrictions	No	No	Yes	No	17/07/00
Oldfields	No Gender Restrictions	No	No	Yes	No	11/06/09 11:13
Oldfields	No Gender Restrictions	No	No	Yes	No	10/07/03
Oldfields	No Gender Restrictions	No	No	Yes	No	19/03/01
Oldfields	No Gender Restrictions	No	No	Yes	No	19/03/01
Oldfields	No Gender Restrictions	No	No	Yes	No	19/03/01
Oldfields	No Gender Restrictions	No	No	Yes	No	19/03/01
Oldfields	No Gender Restrictions	No	No	Yes	No	19/03/01
Oldfields	No Gender Restrictions	No	No	Yes	No	19/03/01
Oldfields	No Gender Restrictions	No	No	Yes	No	19/03/01
Oldfields	No Gender Restrictions	No	No	Yes	No	19/03/01
Oldfields	No Gender Restrictions	No	No	Yes	No	20/03/01
Oldfields	No Gender Restrictions	No	No	Yes	No	23/11/00
Oldfields	No Gender Restrictions	No	No	No	No	26/07/00

Appendix 3: Aboriginal Cultural Heritage Registered site by Local Government

ID	Name	Legacy ID	Status	Type	R
1414	YOUNG RIVER BRIDGE CAMP.	W01750	Registered Site		Go
1456	STUART DOWNS	W01739	Registered Site	Artefacts / Scatter	Go
1457	TORRADUP NORTH	W01740	Registered Site	Artefacts / Scatter	Go
1458	BANDY CREEK	W01741	Registered Site	Artefacts / Scatter, Quarry	Go
1459	RED LAKE	W01742	Registered Site	Artefacts / Scatter	Go
1635	STOKES INLET OCHRE QUARRY	W01539	Registered Site	Artefacts / Scatter, Quarry	Go
1636	WALITCH BENWENERUP	W01540	Registered Site	Mythological	Go
1637	STOCKYARD CREEK.	W01541	Registered Site		Go
1639	CORAMUP.	W01543	Registered Site		Go
1640	JURANDA	W01544	Registered Site	Artefacts / Scatter	Go
1642	BREEBOORINIA.	W01546	Registered Site	Artefacts / Scatter	Go
1643	BALBINIA	W01547	Registered Site	Artefacts / Scatter, Historical	Go
1677	ORLEANS GRANITE.	W01529	Registered Site	Artefacts / Scatter	Go
1708	ESPASCO WATERCOURSE	W01451	Registered Site	Artefacts / Scatter	Go
1711	WIYAT	W01454	Registered Site	Ceremonial, Mythological	Go
1712	FANNY COVE	W01455	Registered Site	Historical	Go
1714	MIDDLE ISLAND I	W01457	Registered Site	Artefacts / Scatter	Go

Authority: ESPERANCE

Region	Restrictions	File Restricted	Location Restricted	Boundary Reliable	Protected Area	Boundary Last Updated
Oldfields	No Gender Restrictions	No	No	Yes	No	21/09/00
Oldfields	No Gender Restrictions	No	No	Yes	No	27/07/00
Oldfields	No Gender Restrictions	No	No	Yes	No	26/07/00
Oldfields	No Gender Restrictions	No	No	Yes	No	19/10/00
Oldfields	No Gender Restrictions	No	No	Yes	No	18/10/00
Oldfields	No Gender Restrictions	No	No	Yes	No	26/07/00
Oldfields	No Gender Restrictions	Yes	Yes	Yes	No	8/11/99
Oldfields	No Gender Restrictions	No	No	No	No	19/10/00
Oldfields	No Gender Restrictions	No	No	No	No	3/12/98
Oldfields	No Gender Restrictions	No	No	Yes	No	8/07/99
Oldfields	No Gender Restrictions	No	No	Yes	No	15/03/01
Oldfields	No Gender Restrictions	No	No	Yes	No	15/03/01
Oldfields	No Gender Restrictions	No	No	No	No	18/10/00
Oldfields	No Gender Restrictions	No	No	No	No	3/12/98
Oldfields	No Gender Restrictions	Yes	Yes	Yes	No	8/11/99
Oldfields	No Gender Restrictions	No	No	No	No	3/12/98
Oldfields	No Gender Restrictions	No	No	Yes	No	19/06/00

Appendix 3: Aboriginal Cultural Heritage Registered site by Local Government

ID	Name	Legacy ID	Status	Type	R
1715	MIDDLE ISLAND 2	W01458	Registered Site	Artefacts / Scatter	G
1716	MIDDLE ISLAND 3	W01459	Registered Site	Artefacts / Scatter	G
1717	MIDDLE ISLAND 4	W01460	Registered Site	Artefacts / Scatter	G
1718	MIDDLE ISLAND 5	W01461	Registered Site	Artefacts / Scatter	G
1719	MIDDLE ISLAND 6	W01462	Registered Site	Artefacts / Scatter	G
1720	MIDDLE ISLAND 7	W01463	Registered Site	Artefacts / Scatter	G
1747	WHARTON 01	W01435	Registered Site	Artefacts / Scatter	G
1748	ORLEANS NORTH	W01436	Registered Site	Artefacts / Scatter	G
1752	ESPASCO	W01440	Registered Site	Artefacts / Scatter	G
1753	MT HAWES Paddock	W01441	Registered Site	Artefacts / Scatter	G
1755	MT BELCHES	W01443	Registered Site	Artefacts / Scatter	G
1756	LINKLETTERS 13	W01444	Registered Site	Artefacts / Scatter	G
1757	MT NEY	W01445	Registered Site	Artefacts / Scatter	G
1758	MT HEYWARD	W01446	Registered Site	Artefacts / Scatter	G
1759	CONDINGUP 01	W01447	Registered Site	Artefacts / Scatter	G
1760	ESPASCO SWAMP	W01448	Registered Site	Artefacts / Scatter	G
1761	ESPASCO 01	W01449	Registered Site	Artefacts / Scatter	G

Authority: ESPERANCE

Region	Restrictions	File Restricted	Location Restricted	Boundary Reliable	Protected Area	Boundary Last Updated
oldfields	No Gender Restrictions	No	No	No	No	19/06/00
oldfields	No Gender Restrictions	No	No	Yes	No	19/06/00
oldfields	No Gender Restrictions	No	No	No	No	22/06/00
oldfields	No Gender Restrictions	No	No	Yes	No	22/06/00
oldfields	No Gender Restrictions	No	No	Yes	No	22/06/00
oldfields	No Gender Restrictions	No	No	Yes	No	22/06/00
oldfields	No Gender Restrictions	No	No	No	No	3/07/00
oldfields	No Gender Restrictions	No	No	No	No	3/07/00
oldfields	No Gender Restrictions	No	No	Yes	No	3/07/00
oldfields	No Gender Restrictions	No	No	No	No	3/07/00
oldfields	No Gender Restrictions	No	No	No	No	3/07/00
oldfields	No Gender Restrictions	No	No	No	No	3/07/00
oldfields	No Gender Restrictions	No	No	No	No	29/06/00
oldfields	No Gender Restrictions	No	No	Yes	No	17/01/01
oldfields	No Gender Restrictions	No	No	No	No	3/12/98
oldfields	No Gender Restrictions	No	No	Yes	No	29/06/00
oldfields	No Gender Restrictions	No	No	Yes	No	29/06/00

Appendix 3: Aboriginal Cultural Heritage Registered site by Local Government

ID	Name	Legacy ID	Status	Type	R
1715	MIDDLE ISLAND 2	W01458	Registered Site	Artefacts / Scatter	G
1716	MIDDLE ISLAND 3	W01459	Registered Site	Artefacts / Scatter	G
1717	MIDDLE ISLAND 4	W01460	Registered Site	Artefacts / Scatter	G
1718	MIDDLE ISLAND 5	W01461	Registered Site	Artefacts / Scatter	G
1719	MIDDLE ISLAND 6	W01462	Registered Site	Artefacts / Scatter	G
1720	MIDDLE ISLAND 7	W01463	Registered Site	Artefacts / Scatter	G
1747	WHARTON 01	W01435	Registered Site	Artefacts / Scatter	G
1748	ORLEANS NORTH	W01436	Registered Site	Artefacts / Scatter	G
1752	ESPASCO	W01440	Registered Site	Artefacts / Scatter	G
1753	MT HAWES Paddock	W01441	Registered Site	Artefacts / Scatter	G
1755	MT BELCHES	W01443	Registered Site	Artefacts / Scatter	G
1756	LINKLETTERS 13	W01444	Registered Site	Artefacts / Scatter	G
1757	MT NEY	W01445	Registered Site	Artefacts / Scatter	G
1758	MT HEYWARD	W01446	Registered Site	Artefacts / Scatter	G
1759	CONDINGUP 01	W01447	Registered Site	Artefacts / Scatter	G
1899	DIAMOND HILL SOUTH	W01255	Registered Site	Artefacts / Scatter	G

Authority: ESPERANCE

Region	Restrictions	File Restricted	Location Restricted	Boundary Reliable	Protected Area	Boundary Last Updated
oldfields	No Gender Restrictions	No	No	No	No	19/06/00
oldfields	No Gender Restrictions	No	No	Yes	No	19/06/00
oldfields	No Gender Restrictions	No	No	No	No	22/06/00
oldfields	No Gender Restrictions	No	No	Yes	No	22/06/00
oldfields	No Gender Restrictions	No	No	Yes	No	22/06/00
oldfields	No Gender Restrictions	No	No	Yes	No	22/06/00
oldfields	No Gender Restrictions	No	No	No	No	3/07/00
oldfields	No Gender Restrictions	No	No	No	No	3/07/00
oldfields	No Gender Restrictions	No	No	Yes	No	3/07/00
oldfields	No Gender Restrictions	No	No	No	No	3/07/00
oldfields	No Gender Restrictions	No	No	No	No	3/07/00
oldfields	No Gender Restrictions	No	No	No	No	3/07/00
oldfields	No Gender Restrictions	No	No	No	No	29/06/00
oldfields	No Gender Restrictions	No	No	Yes	No	17/01/01
oldfields	No Gender Restrictions	No	No	No	No	3/12/98
oldfields	No Gender Restrictions	No	No	No	No	1/08/00

Appendix 3: Aboriginal Cultural Heritage Registered site by Local Government

ID	Name	Legacy ID	Status	Type	Regi
1900	SHEOAKS HILL	W01256	Registered Site	Artefacts / Scatter	Goldf
1901	SCARP CHERT SOURCE	W01257	Registered Site	Artefacts / Scatter, Quarry	Goldf
1902	EASTER EGG 04	W01258	Registered Site	Artefacts / Scatter, Quarry	Goldf
1903	EASTER EGG 05	W01259	Registered Site	Artefacts / Scatter, Quarry	Goldf
1904	EASTER EGG 01	W01260	Registered Site	Artefacts / Scatter, Quarry	Goldf
1905	EASTER EGG 03	W01261	Registered Site	Artefacts / Scatter, Quarry	Goldf
1910	DUKE OF ORLEANS BAY 1	W01266	Registered Site	Artefacts / Scatter, Quarry	Goldf
1922	MUNGLIGINUP BEACH BLOWOUT	W01278	Registered Site	Quarry	Goldf
1931	DUNNS ROCK WEST	W01232	Registered Site	Artefacts / Scatter, Man-Made Structure, Quarry	Goldf
1934	LOW/HIGH QUARRY	W01235	Registered Site	Artefacts / Scatter, Quarry	Goldf
1937	MT HAWES	W01238	Registered Site	Artefacts / Scatter	Goldf
1938	VICTORIA HARBOUR HILL	W01239	Registered Site	Artefacts / Scatter	Goldf
1940	CAPE ARID GRANITE FLATS 01	W01241	Registered Site	Artefacts / Scatter	Goldf
1941	CAPE ARID GRANITE FLATS 02	W01242	Registered Site	Artefacts / Scatter	Goldf
1942	CAPE ARID MALLEE PATCH	W01243	Registered Site	Artefacts / Scatter, Quarry	Goldf
1943	CAPE ARID HILLOCK 01	W01244	Registered Site	Artefacts / Scatter, Man-Made Structure	Goldf
1944	CAPE ARID HILLOCK 02	W01245	Registered Site	Artefacts / Scatter	Goldf

Authority: **ESPERANCE**

Location	Restrictions	File Restricted	Location Restricted	Boundary Reliable	Protected Area	Boundary Last Updated
Fields	No Gender Restrictions	No	No	Yes	No	1/08/00
Fields	No Gender Restrictions	No	No	Yes	No	1/08/00
Fields	No Gender Restrictions	No	No	No	No	21/11/00
Fields	No Gender Restrictions	No	No	No	No	21/11/00
Fields	No Gender Restrictions	No	No	No	No	21/11/00
Fields	No Gender Restrictions	No	No	No	No	21/11/00
Fields	No Gender Restrictions	No	No	No	No	18/10/00
Fields	No Gender Restrictions	No	No	No	No	18/10/00
Fields	No Gender Restrictions	No	No	Yes	No	21/11/00
Fields	No Gender Restrictions	No	No	No	No	3/12/98
Fields	No Gender Restrictions	No	No	Yes	No	18/10/00
Fields	No Gender Restrictions	No	No	Yes	No	21/11/00
Fields	No Gender Restrictions	No	No	Yes	No	1/08/00
Fields	No Gender Restrictions	No	No	Yes	No	1/08/00
Fields	No Gender Restrictions	No	No	No	No	2/08/00
Fields	No Gender Restrictions	No	No	No	No	1/08/00
Fields	No Gender Restrictions	No	No	No	No	1/08/00

Appendix 3: Aboriginal Cultural Heritage Registered site by Local Government

ID	Name	Legacy ID	Status	Type	Region
1945	POISON CREEK HEADLAND	Wo1246	Registered Site	Artefacts / Scatter, Man-Made Structure	Goldfield
1947	MT ARID SOUTH	Wo1248	Registered Site	Artefacts / Scatter, Man-Made Structure	Goldfield
1948	HILL SPRINGS SOUTH	Wo1249	Registered Site	Artefacts / Scatter	Goldfield
1949	CAPE ARID PLATFORM	Wo1250	Registered Site	Artefacts / Scatter	Goldfield
1951	CAPE ARID ROCKY OUTCROP	Wo1252	Registered Site	Artefacts / Scatter	Goldfield
1952	HAMISH HILL	Wo1253	Registered Site	Artefacts / Scatter, Man-Made Structure	Goldfield
1953	DIAMOND HILL	Wo1254	Registered Site	Artefacts / Scatter	Goldfield
1962	HOWIG HILL.	Wo1209	Registered Site	Artefacts / Scatter, Rockshelter	Goldfield
1963	HOWIG NORTH-EAST	Wo1210	Registered Site	Artefacts / Scatter	Goldfield
1966	ALEXANDER POINT QUARRY	Wo1213	Registered Site	Artefacts / Scatter, Quarry	Goldfield
1971	HELLFIRE BAY EAST	Wo1218	Registered Site	Artefacts / Scatter, Quarry	Goldfield
1973	MT BELCHES SOUTH QUARRY	Wo1220	Registered Site	Quarry	Goldfield
1981	ROLLONDS ROAD	Wo1176	Registered Site	Skeletal Material / Burial	Goldfield
1989	ALEXANDER BAY WEST	Wo1184	Registered Site	Artefacts / Scatter	Goldfield
1990	ALEXANDER BAY RIDGE	Wo1185	Registered Site	Artefacts / Scatter, Quarry	Goldfield
2008	NARE'S BEACH QUARRY	Wo1150	Registered Site	Quarry	Goldfield
2145	MARGARET COVE	Wo1073	Registered Site	Artefacts / Scatter	Goldfield

Authority: **ESPERANCE**

Id	Restrictions	File Restricted	Location Restricted	Boundary Reliable	Protected Area	Boundary Last Updated
1	No Gender Restrictions	No	No	Yes	No	1/08/00
2	No Gender Restrictions	No	No	No	No	2/08/00
3	No Gender Restrictions	No	No	Yes	No	1/08/00
4	No Gender Restrictions	No	No	Yes	No	1/08/00
5	No Gender Restrictions	No	No	Yes	No	1/08/00
6	No Gender Restrictions	No	No	Yes	No	1/08/00
7	No Gender Restrictions	No	No	Yes	No	1/08/00
8	No Gender Restrictions	No	No	Yes	No	18/10/00
9	No Gender Restrictions	No	No	No	No	3/12/98
10	No Gender Restrictions	No	No	No	No	18/10/00
11	No Gender Restrictions	No	No	No	No	3/12/98
12	No Gender Restrictions	No	No	No	No	18/10/00
13	No Gender Restrictions	No	No	No	No	23/11/00
14	No Gender Restrictions	No	No	No	No	19/10/00
15	No Gender Restrictions	No	No	No	No	19/10/00
16	No Gender Restrictions	No	No	No	No	18/10/00
17	No Gender Restrictions	No	No	No	No	27/07/00

Appendix 3: Aboriginal Cultural Heritage Registered site by Local Government

ID	Name	Legacy ID	Status	Type	Region
2146	FANNY COVE	W01074	Registered Site	Artefacts / Scatter	Goldfield
2147	SANDY BIGHT CREEK	W01075	Registered Site	Artefacts / Scatter	Goldfield
2157	TOOKLEJENNA.	W01085	Registered Site	Artefacts / Scatter, Historical	Goldfield
2158	THE CUPS.	W01086	Registered Site	Artefacts / Scatter	Goldfield
2160	MT BEAUMONT	W01088	Registered Site	Artefacts / Scatter, Quarry	Goldfield
2183	MT BELCHES WEST/ BANDI CAVE.	W01055	Registered Site	Artefacts / Scatter, Rockshelter	Goldfield
2184	ALEXANDER RIVERMOUTH QUARRY	W01056	Registered Site	Artefacts / Scatter, Quarry	Goldfield
2185	CHEYNE POINT QUARRY	W01057	Registered Site	Artefacts / Scatter, Quarry	Goldfield
2187	CHEETUP SOUTH 2	W01060	Registered Site	Artefacts / Scatter, Quarry	Goldfield
2396	RESERVE STONE ARRANGEMENT.	W00805	Registered Site	Artefacts / Scatter, Ceremonial, Man-Made Structure, Mythological	Goldfield
2398	ALEXANDER RIVER MOUTH	W00807	Registered Site	Artefacts / Scatter	Goldfield
2442	MT RAGGED	W00796	Registered Site	Artefacts / Scatter, Quarry	Goldfield
2534	DUNNS ROCK QUARRY	W00667	Registered Site	Artefacts / Scatter, Quarry	Goldfield
2535	BARRIER ENGRAVING	W00668	Registered Site	Engraving	Goldfield
2537	MT ARID QUARRY	W00670	Registered Site	Artefacts / Scatter, Quarry	Goldfield
2538	THISTLE COVE OCHRE SOURCE.	W00671	Registered Site		Goldfield

Authority: ESPERANCE

Field	Restrictions	File Restricted	Location Restricted	Boundary Reliable	Protected Area	Boundary Last Updated
Fields	No Gender Restrictions	No	No	No	No	27/07/00
Fields	No Gender Restrictions	No	No	No	No	3/12/98
Fields	No Gender Restrictions	No	No	Yes	No	2/08/00
Fields	No Gender Restrictions	No	No	No	No	3/12/98
Fields	No Gender Restrictions	No	No	No	No	3/12/98
Fields	No Gender Restrictions	No	No	Yes	No	22/11/00
Fields	No Gender Restrictions	No	No	No	No	19/10/00
Fields	No Gender Restrictions	No	No	Yes	No	9/07/99
Fields	No Gender Restrictions	No	No	No	No	22/11/00
Fields	No Gender Restrictions	Yes	Yes	Yes	Yes	13/08/99
Fields	No Gender Restrictions	No	No	No	No	19/10/00
Fields	No Gender Restrictions	No	No	Yes	No	1/08/00
Fields	No Gender Restrictions	No	No	Yes	No	9/07/99
Fields	No Gender Restrictions	No	No	Yes	No	31/07/00
Fields	No Gender Restrictions	No	No	No	No	3/12/98
Fields	No Gender Restrictions	No	No	Yes	No	27/06/00

Appendix 3: Aboriginal Cultural Heritage Registered site by Local Government

ID	Name	Legacy ID	Status	Type	Region
2585	MT MERIVALE.	W00613	Registered Site	Artefacts / Scatter, Historical	Goldfield
2582	MT BELCHES SOUTH.	W00610	Registered Site	Artefacts / Scatter	Goldfield
2620	CHEETUP HILL/ DJIRTUP.	W00594	Registered Site	Artefacts / Scatter, Rockshelter	Goldfield
2621	CHEYNE BEACH CHERT	W00595	Registered Site	Artefacts / Scatter, Quarry	Goldfield
2622	CASCADES ROCK ARRANGEMENT	W00596	Registered Site	Artefacts / Scatter, Man-Made Structure	Goldfield
2634	YOKINUP BAY HEADLAND	W00553	Registered Site	Artefacts / Scatter	Goldfield
2635	THOMAS RIVER HEADLAND	W00554	Registered Site	Artefacts / Scatter	Goldfield
2636	TAGON HARBOUR ROAD	W00555	Registered Site	Artefacts / Scatter	Goldfield
2637	GRANITE OUTCROP	W00556	Registered Site	Artefacts / Scatter	Goldfield
2638	BELINUP HILL	W00557	Registered Site	Artefacts / Scatter	Goldfield
2639	THOMAS RIVER BANK	W00558	Registered Site	Artefacts / Scatter	Goldfield
2641	THOMAS RIVER STATION	W00560	Registered Site	Artefacts / Scatter	Goldfield
2642	BOYATUP HILL 1 - 5.	W00561	Registered Site	Artefacts / Scatter, Painting, Rockshelter	Goldfield
2646	BOYATUP HILL DEPESSN.	W00565	Registered Site	Artefacts / Scatter	Goldfield
2647	WASHPOOL	W00566	Registered Site	Artefacts / Scatter	Goldfield
2649	ABALONE CAMP	W00568	Registered Site	Artefacts / Scatter	Goldfield
2651	QUARTZ SEAM	W00570	Registered Site	Artefacts / Scatter, Quarry	Goldfield

Authority: ESPERANCE

Location	Restrictions	File Restricted	Location Restricted	Boundary Reliable	Protected Area	Boundary Last Updated
Fields	No Gender Restrictions	No	No	No	No	3/12/98
Fields	No Gender Restrictions	No	No	No	No	19/10/00
Fields	No Gender Restrictions	No	No	Yes	No	22/11/00
Fields	No Gender Restrictions	No	No	No	No	22/11/00
Fields	No Gender Restrictions	No	No	No	No	3/12/98
Fields	No Gender Restrictions	No	No	No	No	3/12/98
Fields	No Gender Restrictions	No	No	No	No	2/08/00
Fields	No Gender Restrictions	No	No	No	No	31/07/00
Fields	No Gender Restrictions	No	No	No	No	31/07/00
Fields	No Gender Restrictions	No	No	No	No	31/07/00
Fields	No Gender Restrictions	No	No	Yes	No	21/09/00
Fields	No Gender Restrictions	No	No	Yes	No	21/03/03
Fields	No Gender Restrictions	No	No	Yes	Yes	29/06/01
Fields	No Gender Restrictions	No	No	No	No	2/08/00
Fields	No Gender Restrictions	No	No	No	No	21/02/07 15:55
Fields	No Gender Restrictions	No	No	No	No	2/08/00
Fields	No Gender Restrictions	No	No	No	No	2/08/00

Appendix 3: Aboriginal Cultural Heritage Registered site by Local Government

ID	Name	Legacy ID	Status	Type	Region
2652	CAPE ARID 2	W00571	Registered Site	Artefacts / Scatter	Goldfi
2653	CAPE ARID 1	W00572	Registered Site	Artefacts / Scatter	Goldfi
2654	CAPE ARID 3	W00573	Registered Site	Artefacts / Scatter	Goldfi
2681	SANDHILL	W00546	Registered Site	Artefacts / Scatter	Goldfi
2683	SHAO-LU ROAD	W00548	Registered Site	Artefacts / Scatter	Goldfi
2686	CHERT OUTCROP	W00551	Registered Site	Artefacts / Scatter, Quarry	Goldfi
2730	MT LE GRAND AREA,ESPERANCE.	W00487	Registered Site	Artefacts / Scatter, Rockshelter	Goldfi
2731	FRENCHMAN PEAK 1.	W00488	Registered Site	Artefacts / Scatter	Goldfi
2732	MIDDEN SITE, ROSSITER BAY	W00489	Registered Site	Midden / Scatter	Goldfi
2874	CAVE ROCK, NORSEMAN	W00309	Registered Site	Artefacts / Scatter, Engraving, Painting	Goldfi
2881	TOMMY WINDICH'S GRAVE,ESPERANC	W00316	Registered Site	Skeletal Material / Burial	Goldfi
2882	MT RIDLEY, ESPERANCE.	W00317	Registered Site	Artefacts / Scatter, Grinding Patches / Grooves, Painting	Goldfi
17194	Bandy Creek Burial Site		Registered Site	Skeletal Material / Burial	South
26264	Young River		Registered Site	Mythological	Goldfi
26265	Oldfield River		Registered Site	Mythological	Goldfi
26266	Lort River		Registered Site	Mythological	Goldfi

Authority: ESPERANCE

Location	Restrictions	File Restricted	Location Restricted	Boundary Reliable	Protected Area	Boundary Last Updated
Fields	No Gender Restrictions	No	No	No	No	2/08/00
Fields	No Gender Restrictions	No	No	No	No	2/08/00
Fields	No Gender Restrictions	No	No	No	No	9/11/00
Fields	No Gender Restrictions	No	No	No	No	19/10/00
Fields	No Gender Restrictions	No	No	Yes	No	18/10/00
Fields	No Gender Restrictions	No	No	No	No	3/12/98
Fields	No Gender Restrictions	No	No	Yes	No	27/06/00
Fields	No Gender Restrictions	No	No	Yes	No	28/06/00
Fields	No Gender Restrictions	No	No	Yes	No	28/06/00
Fields	No Gender Restrictions	No	No	Yes	No	17/07/00
Fields	No Gender Restrictions	No	No	Yes	No	10/07/03
Fields	No Gender Restrictions	No	No	Yes	No	18/10/00
ern	No Gender Restrictions	No	No	Yes	No	14/06/00
Fields	No Gender Restrictions	No	No	Yes	No	22/01/09 9:26
Fields	No Gender Restrictions	No	No	Yes	No	2/02/09 14:48
Fields	No Gender Restrictions	No	No	Yes	No	3/02/09 15:11

Appendix 3: Aboriginal Cultural Heritage Registered site by Local Government

ID	Name	Legacy ID	Status	Type	R
962	TUNNEY FISH TRAPS	So2872	Registered Site	Fish Trap	So
4471	ANDERSON LAKE	So2696	Registered Site	Artefacts / Scatter, Man-Made Structure, Quarry	So
4925	TUNNEY WILGIE.	So1693	Registered Site	Artefacts / Scatter, Ceremonial, Quarry, Skeletal Material / Burial	So
5354	TAMBELLUP GNAMMA.	So0958	Registered Site		So
5738	TAMBELLUP.	So0392	Registered Site	Artefacts / Scatter	So

Authority: BROOMEHILL/TAMBELLUP

Region	Restrictions	File Restricted	Location Restricted	Boundary Reliable	Protected Area	Boundary Last Updated
uthern	No Gender Restrictions	No	No	No	No	3/12/98
uthern	No Gender Restrictions	No	No	Yes	No	13/01/00
uthern	No Gender Restrictions	No	No	Yes	No	22/08/03
uthern	No Gender Restrictions	No	No	No	No	3/12/98
uthern	No Gender Restrictions	No	No	No	No	3/12/98

